



LED HIGH BAY LIGHT

DISC SERIES

100W / 150W / 200W

Housings Only
No Driver
No Light Source

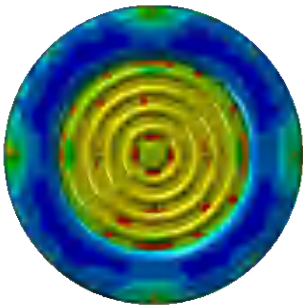
ZHONGSHAN JINCHENG DIECASTING FACTORY

OVERVIEW

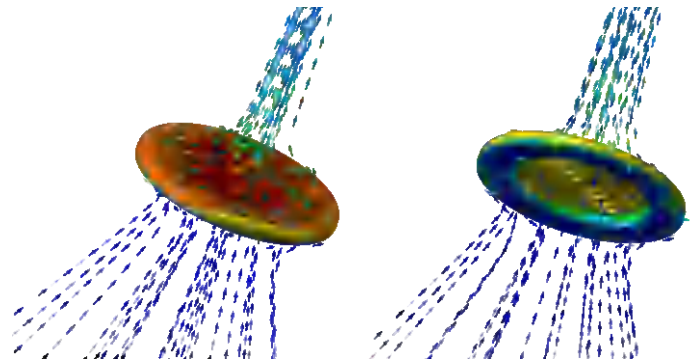
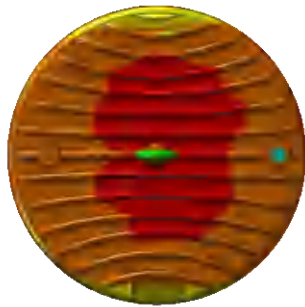


THERMAL MANAGEMENT

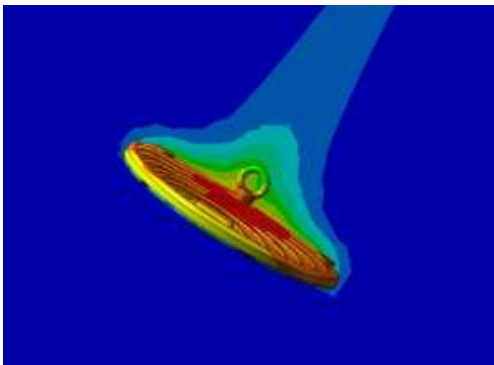
Structure is optimized by advanced FEA technology. Achieving longer lifespan at best cost-efficiency.



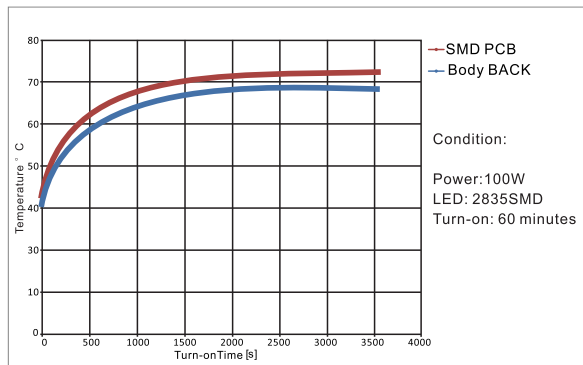
Thermal Conductivity



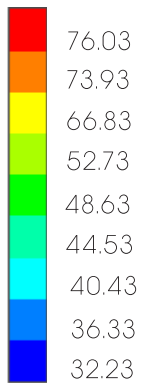
Thermal Air Convection



Thermal Effects to Environment



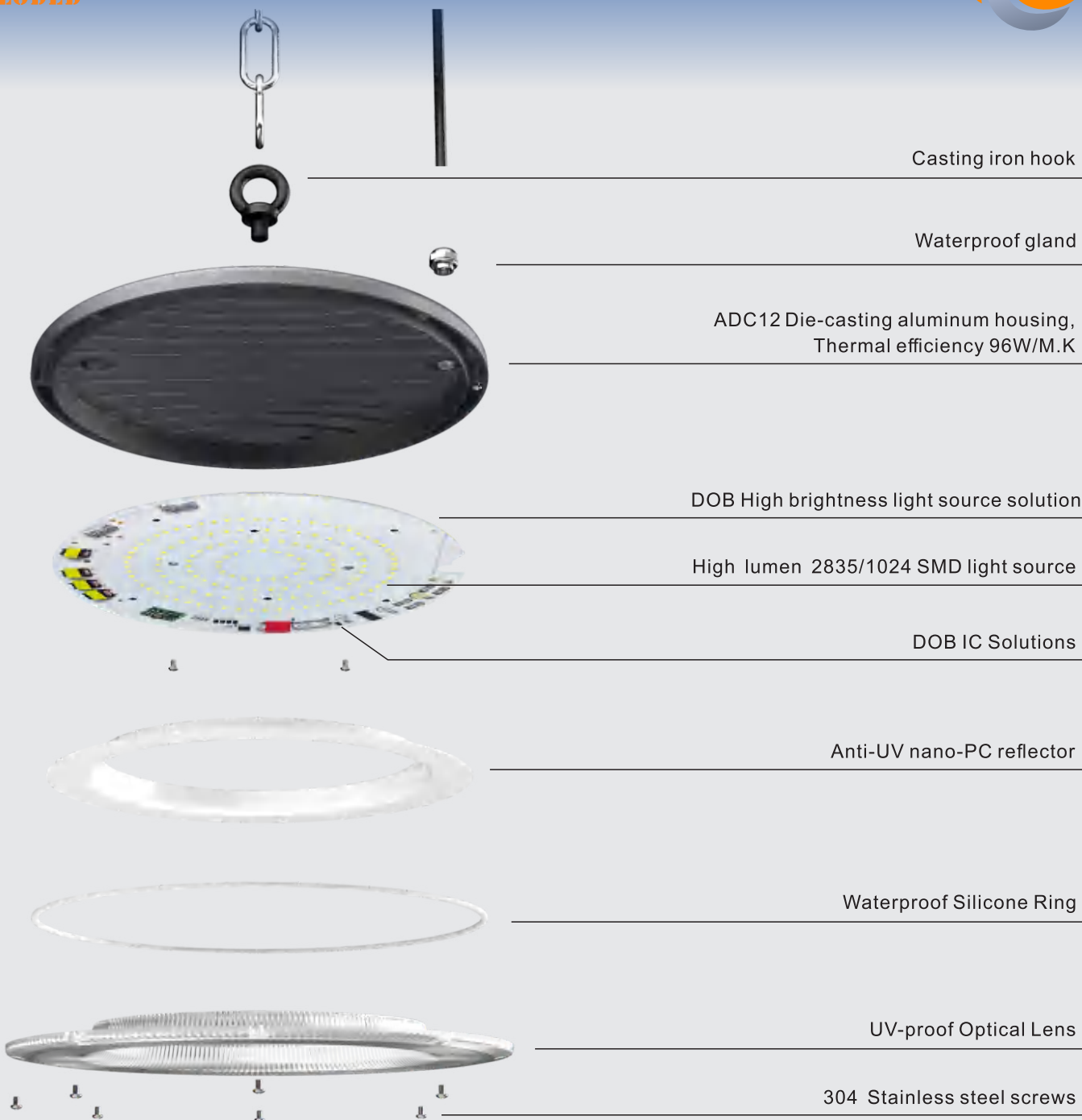
Temperature Rise Curve



Unit: °C



EXPLODED



The hook can be removed to save shipping costs.



Ultra-slim Design



APPLICATIONS

This series of high bay light have IP65 protection design.

Widely used in warehouse, sports centers, logistic centers, supermarkets, train stations and other similar indoor and outdoor locations.

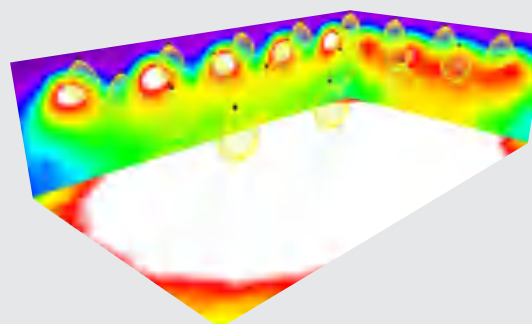
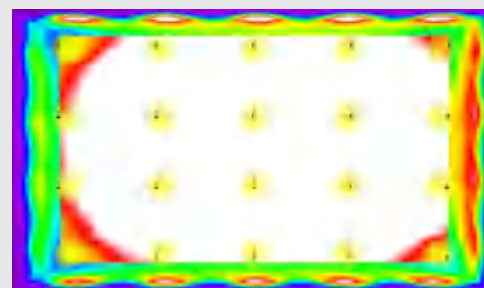
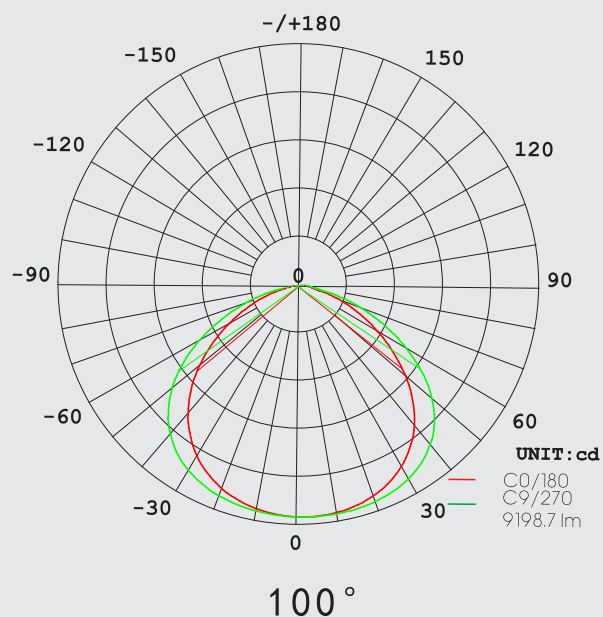




OPTICS

Technical support:

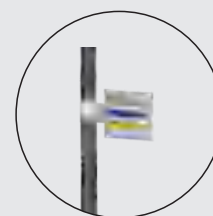
By providing the length, width and other parameters of the space and telling us the purpose of the space, we can conduct professional DIALUX lamp layout simulation for you. Pre evaluate the installation quantity and illumination effect of lamps for your project. We have a complete .ies file for each type of lamp. You are welcome to request it.



ELECTRICAL



DOB/LINEAR TECHNOLOGY



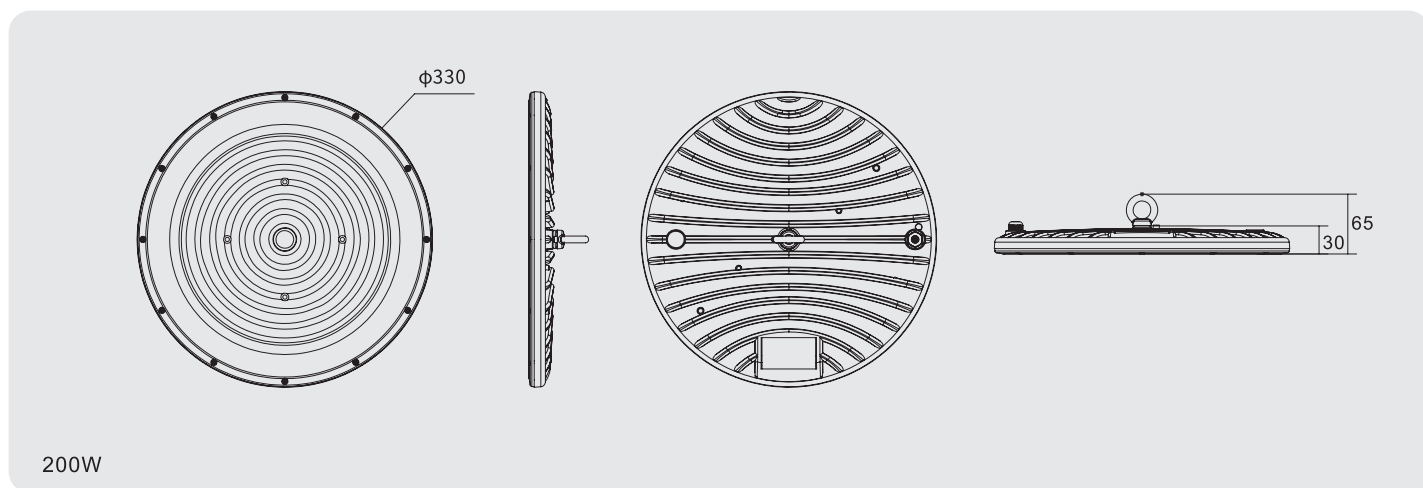
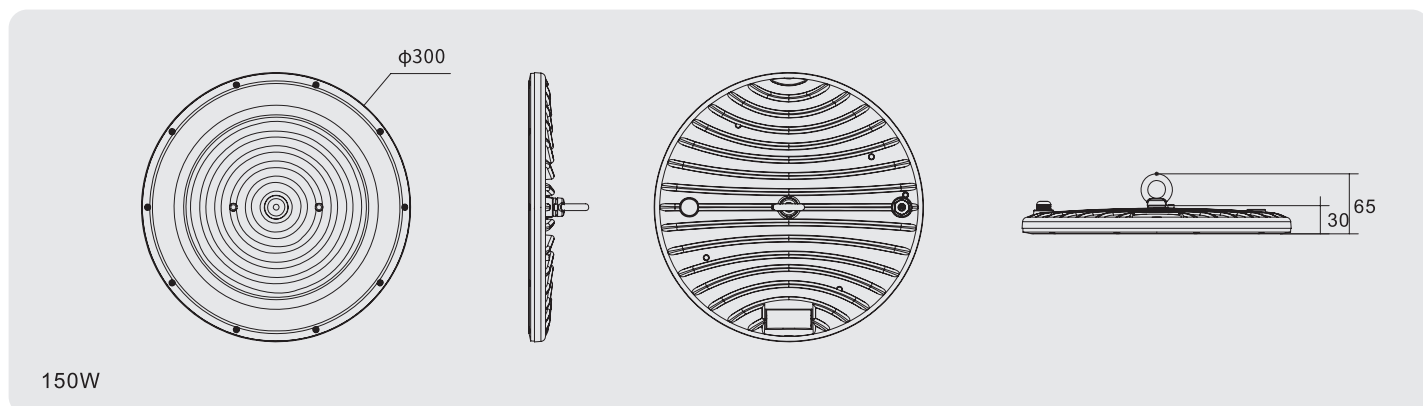
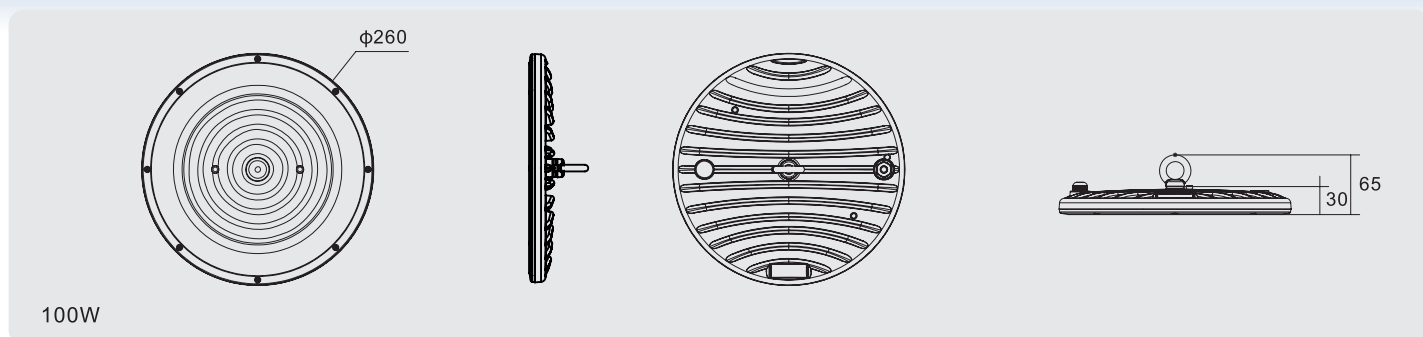
Brown:L
 Blue:N
 Yellow& Green:GND

- | | |
|---------------------------------------|--------------------------------------|
| 1 AC85-265V 50/60Hz universal voltage | 5 LED Driver IP65 |
| 2 PF>0.95 | 6 Efficiency>92%, more energy-saving |
| 3 THD<15% | 7 Start time 0.75S |
| 4 Surge protection 4KV | |

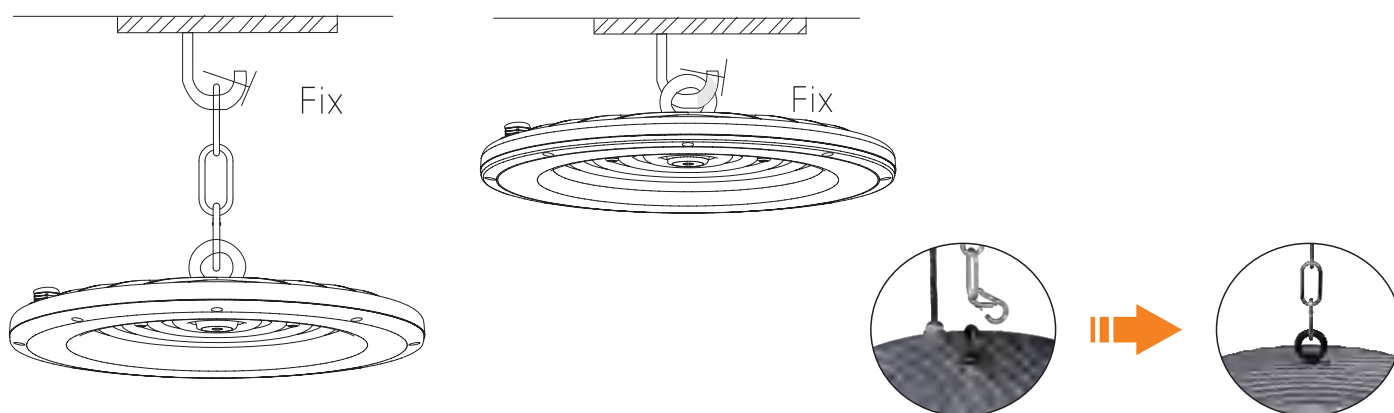


DIAGRAMS

Unit:mm



INSTALLATION INSTRUCTIONS



SPECIFICATIONS



100W



150W



200W



100W



150W



200W



100W

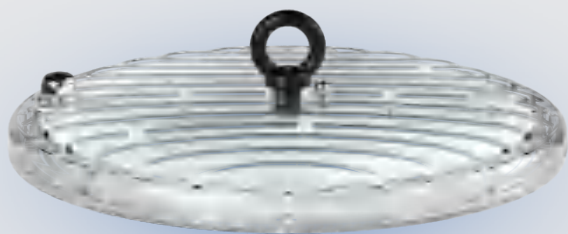


150W



200W

Power	100W	150W	200W
Light Source	2835/1024 Dual Core/6V	2835/1024 Dual Core/6V	2835/1024 Dual Core/6V
Serial-parallel	12B12C	18B12C	24B12C
LED Qty	144pcs	216pcs	288pcs
Efficacy	100-110LM/W	100-110LM/W	100-110LM/W
Beam Angle	100°	100°	100°
CRI	≥80	≥80	≥80
PCB	1.2mm PP	1.2mm PP	1.2mm PP
SPD surge	≥4KV	≥4KV	≥4KV
Surge L,N-G	≥1.5KV	≥1.5KV	≥1.5KV



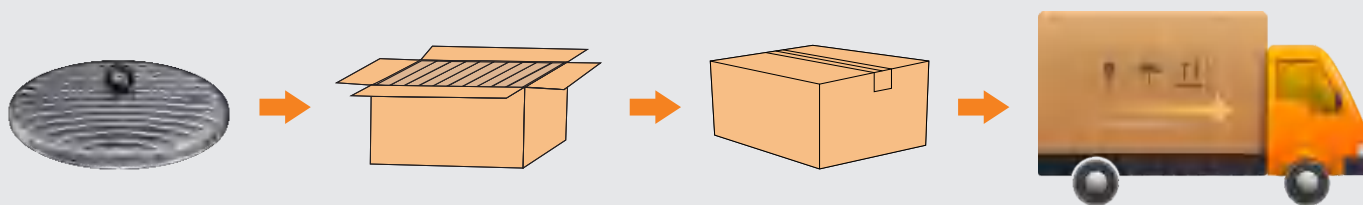
Clear view

FEATURES

1. Input voltage AC110-265V 50/60Hz;
2. Thick diecasting aluminum body.
Corrosion-resistant and durable;
3. Light efficiency up to 100-110Lm/W;
4. 2835 high lumen SMD light source;
5. SPD surge $\geq 4KV$, withstand voltage $> 1.5KV$;
6. IP66 outdoor structural waterproof.

PACKAGING

Power	100W	150W	200W
G.W	400g	515g	625g
Case weight	565g	760g	910g
Inner Box	265*265*40mm	305*305*40mm	335*335*40mm



WARRANT:

1. All High bay light are warranted by the manufacturer to be free of defects in material and workmanship for 2 years.
2. Warranty becomes void if the products is modified, improperly installed or used, damaged by accident or neglect, or if any parts are improperly installed or replaced by the user.
3. During the period of warranty time, if some products of us fails during normal circumstances and applications or have any defects above defined, we shall at our own choice replace or repair the defective products at no charge.
And the liability claims would NOT exceed the value of the product itself.



ZHONGSHAN JINCHENG DIECASTING FACTORY

Factory Add.: No.16, Lefeng Sanlu, Henglan Town, Zhongshan City, Guangdong Province, P.R.China.

Shop Add.: No. 10, Building 14, Ruifeng Market, Guzhen Town, Zhongshan City, Guangdong Province, P.R.China.

Mob. :18689408442 Mr. Chen

E-mail: 236503557@qq.com



Wechat