

Lightsource Test Report

Product Infomation

Product Type: 1.2
 Buyer:

Product Spec: 长剑二代反光1头-6500K-4AH-感应

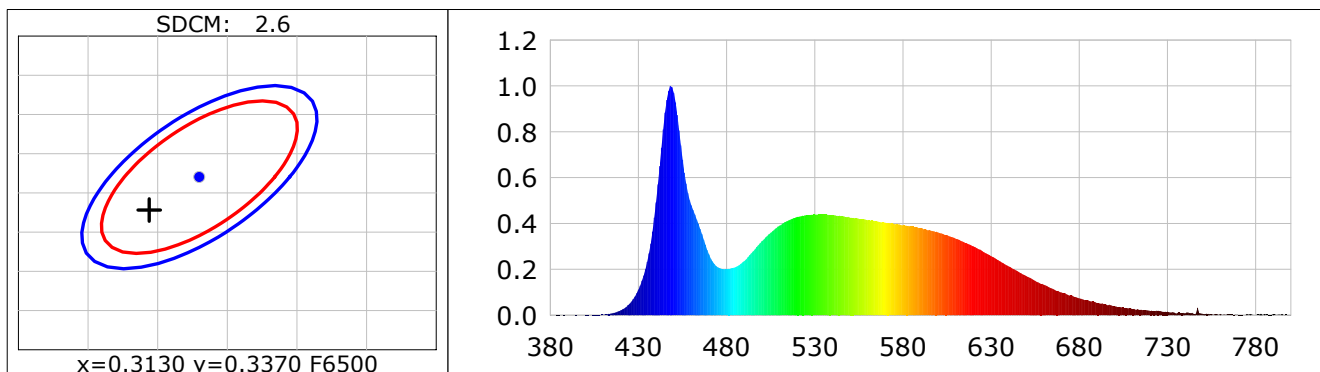
CIE Colorimetric Parameters

Chromaticity coordinates: $x=0.3094$ $y=0.3328$ $u(u')=0.1941$ $v=0.3132$ $v'=0.4699$
 CCT: $T_c=6654K$ ($duv=0.00680$) Color Ratio: $R=0.132$ $G=0.814$ $B=0.054$
 Peak Wavelength: 448.3nm Half Bandwidth: 19.0nm
 Dominant Wavelength: 491.4nm Color Purity: 0.081
 Central Wave: 449.6nm Gravity Wave: 449.1nm
 CRI: $R_a=83.5$ TM30: $R_f=84$, $R_g=96$
 GAI: $GAI_BB_8=90.7$, $GAI_BB_15=95.5$, $GAI_EES=89.0$

R1 =82	R2 =86	R3 =89	R4 =84	R5 =83	R6 =82	R7 =89	R8 =73
R9 =12	R10=67	R11=84	R12=58	R13=83	R14=94	R15=77	

Color Quality Scale: $Q_a=83.6$, $Q_f=83.3$, $Q_p=84.4$, $Q_g=92.9$

Q1 =86	Q2 =98	Q3 =78	Q4 =76	Q5 =83	Q6 =85	Q7 =87	Q8 =91
Q9 =96	Q10=87	Q11=85	Q12=85	Q13=85	Q14=73	Q15=78	



Photometric Parameters

Luminous Flux: 674.93 lm Efficiency: 0.00 lm/W Radiant Power: 2.166 W
 Total mains efficacy: 0.00 lm/W Energy Efficiency Class: G (EU 2019/2015)
 Auxiliary lamp correction factor: 1.00

Electric Parameters

Voltage: 220.00V Current: 0.0000A Power: 0.00W
 Power Factor: 0.0000 Frequency: 50.00Hz

Test Infomation

Scan Range: 380~800:1nm Photometric Method: sphere-spectroradiometer
 Stabilization Time: 0 Sec ALC.: 1.0000 Photometric Condition: Sphere diameter: 2.00m, 4T
 Max of Signal: 54876 (3331) CCD Integration Time: 416.62 ms

Condition: $T_x:25.9^{\circ}C$, $T_i:23.9^{\circ}C$, R.H.:60%
 Test Lab:
 Operator:

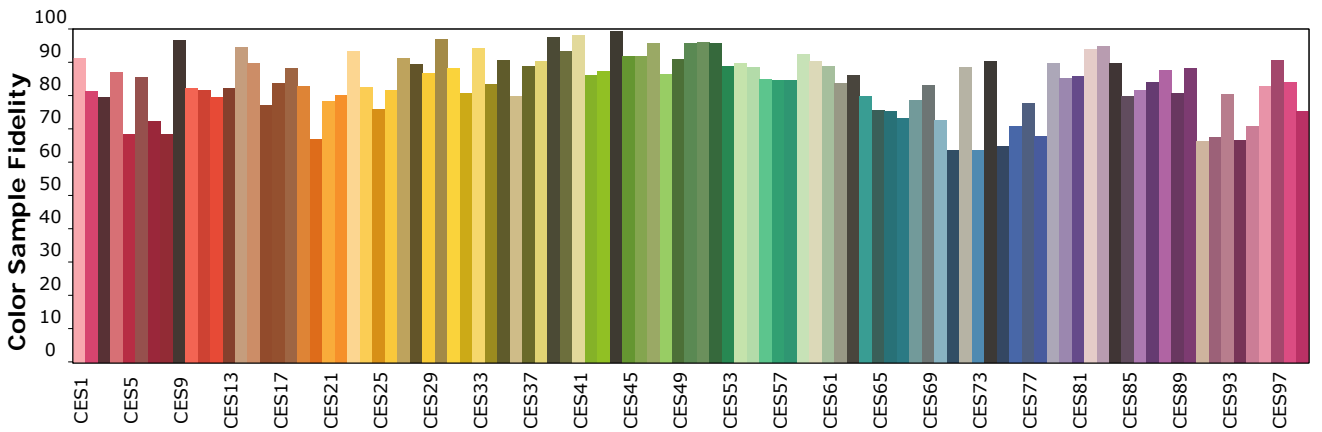
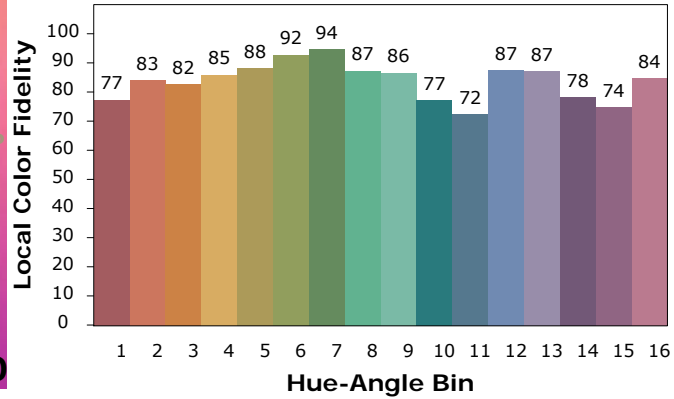
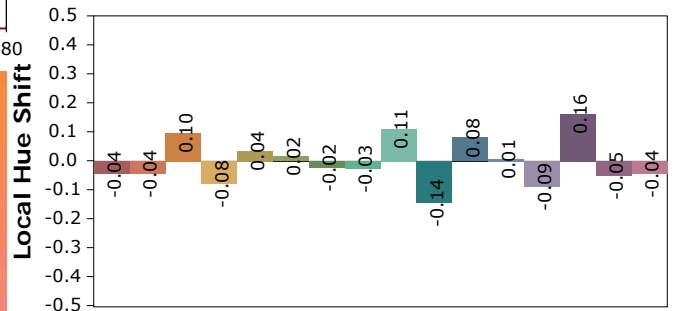
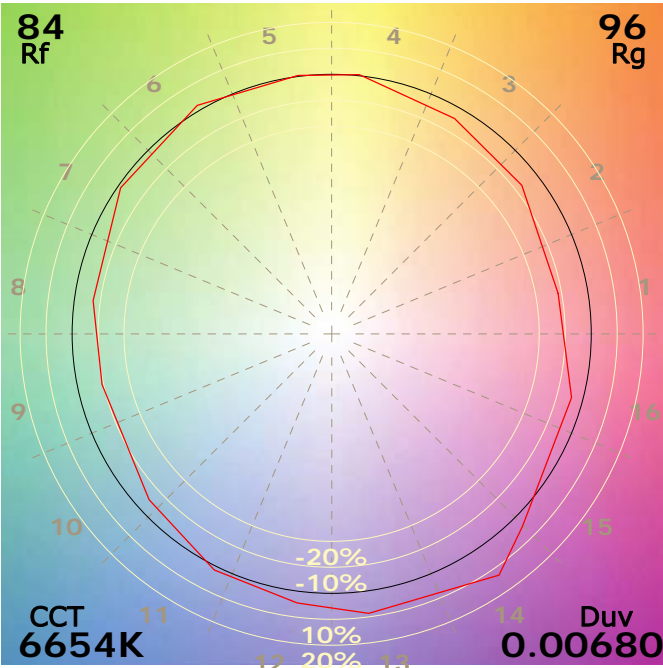
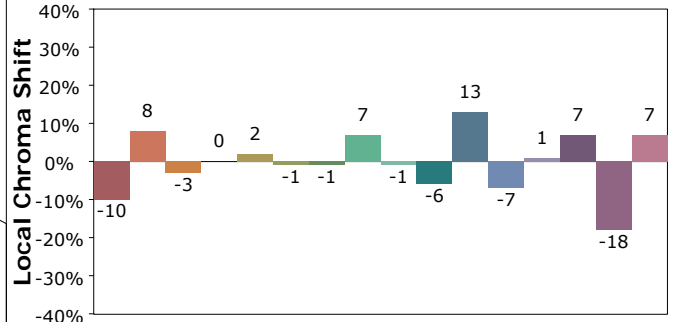
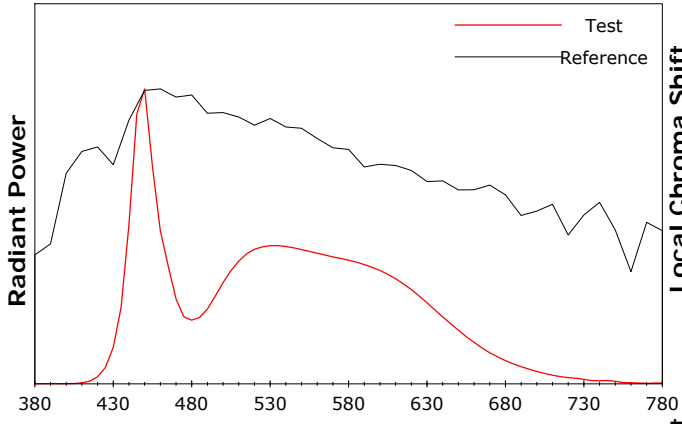
Test Device: CMS-2S (Plus)
 Test Time: 2026-01-09 14:39:26
 Inspector:

Product Information IES TM-30-18 Color Rendition Report

Product Type: 1.2

Product Spec: 长剑二代反光1头-6500K-4AH-感应

Buyer:



Condition: Tx:25.9'C, Ti:23.9'C, R.H.:60%

Test Lab:

Operator:

Test Device: CMS-2S (Plus)

Test Time: 2026-01-09 14:39:26

Inspector: