

## Lightsource Test Report

### Product Infomation

Product Type: 3.66

Product Spec: 长剑一代4头-6500K-12AH

Buyer:

### CIE Colorimetric Parameters

Chromaticity coordinates:  $x=0.3152$   $y=0.3382$   $u(u')=0.1961$   $v=0.3157$   $v'=0.4735$

CCT:  $T_c=6314K$  ( $duv=0.00662$ )

Color Ratio:  $R=0.121$   $G=0.840$   $B=0.039$

Peak Wavelength: 448.3nm

Half Bandwidth: 16.1nm

Dominant Wavelength: 495.2nm

Color Purity: 0.058

Central Wave: 448.3nm

Gravity Wave: 448.2nm

CRI:  $R_a=72.8$

TM30:  $R_f=74$ ,  $R_g=93$

GAI:  $GAI\_BB\_8=86.1$ ,  $GAI\_BB\_15=92.2$ ,  $GAI\_EES=83.2$

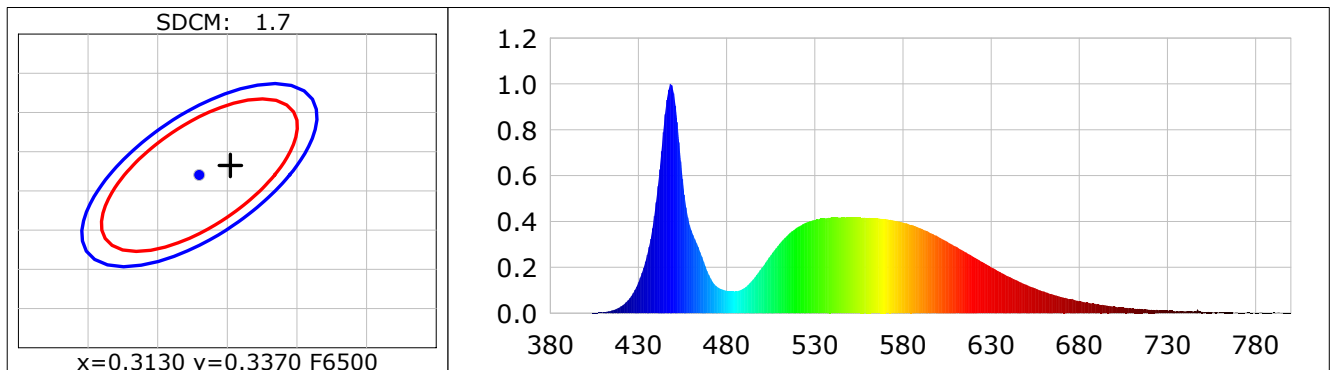
$R1=70$   $R2=76$   $R3=81$   $R4=74$   $R5=72$   $R6=69$   $R7=82$   $R8=60$

$R9=-33$   $R10=44$   $R11=72$   $R12=42$   $R13=71$   $R14=89$   $R15=64$

Color Quality Scale:  $Q_a=73.0$ ,  $Q_f=72.3$ ,  $Q_p=75.1$ ,  $Q_g=88.8$

$Q1=81$   $Q2=95$   $Q3=66$   $Q4=62$   $Q5=71$   $Q6=74$   $Q7=78$   $Q8=86$

$Q9=92$   $Q10=76$   $Q11=71$   $Q12=72$   $Q13=74$   $Q14=58$   $Q15=67$



### Photometric Parameters

Luminous Flux: 1661.0 lm

Efficiency: 0.00 lm/W

Radiant Power: 5.025 W

Total mains efficacy: 0.00 lm/W

Energy Efficiency Class: G (EU 2019/2015)

Auxiliary lamp correction factor: 1.00

### Electric Parameters

Voltage: 220.00V

Current: 0.0000A

Power: 0.00W

Power Factor: 0.0000

Frequency: 49.99Hz

### Test Infomation

Scan Range: 380~800:1nm

Photometric Method: sphere-spectroradiometer

Stabilization Time: 0 Sec ALC.: 1.0000

Photometric Condition: Sphere diameter: 2.00m, 4T

Max of Signal: 45283 (3182)

CCD Integration Time: 123.22 ms

Condition:  $T_x:26.8^{\circ}C$ ,  $T_i:24.8^{\circ}C$ , R.H.:60%

Test Lab:

Operator:

Test Device: CMS-2S (Plus)

Test Time: 2026-01-11 19:49:05

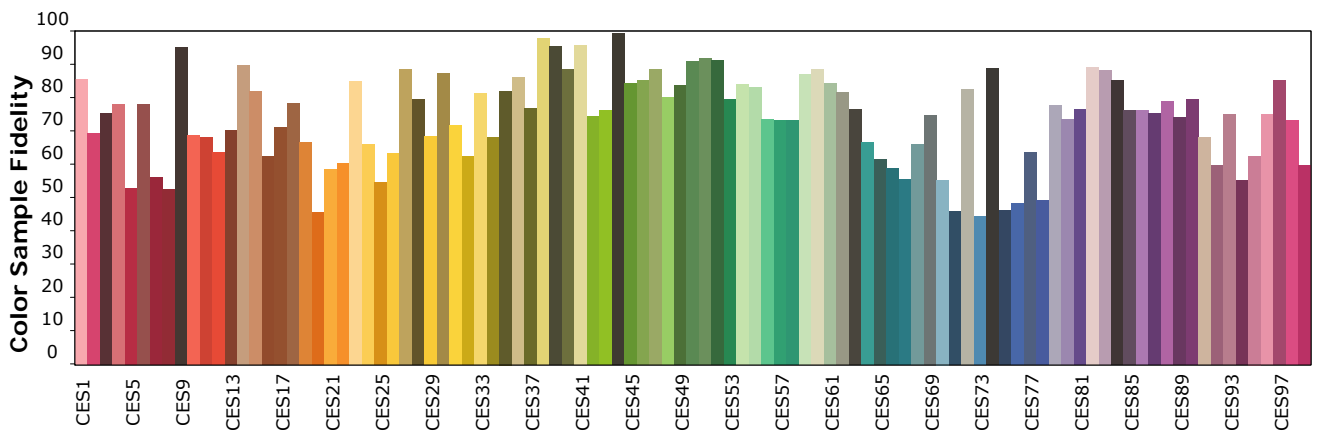
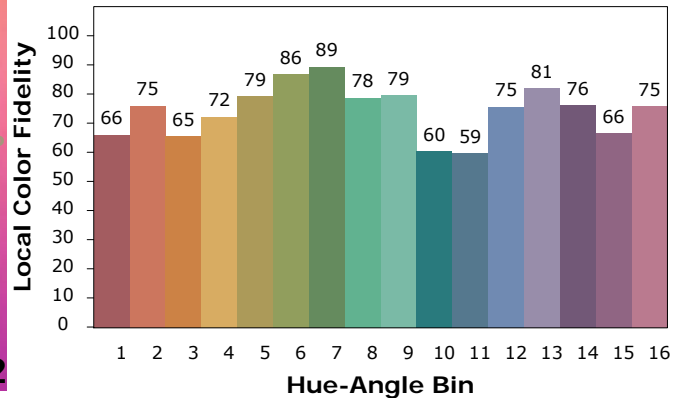
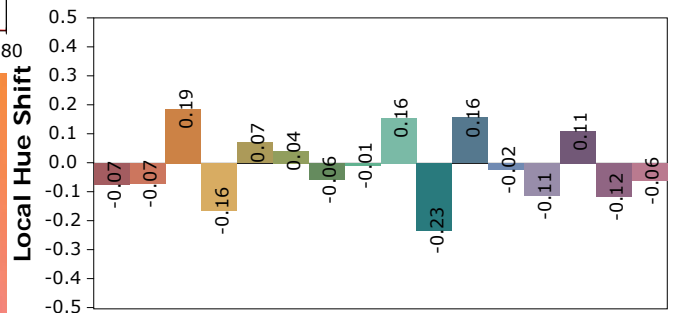
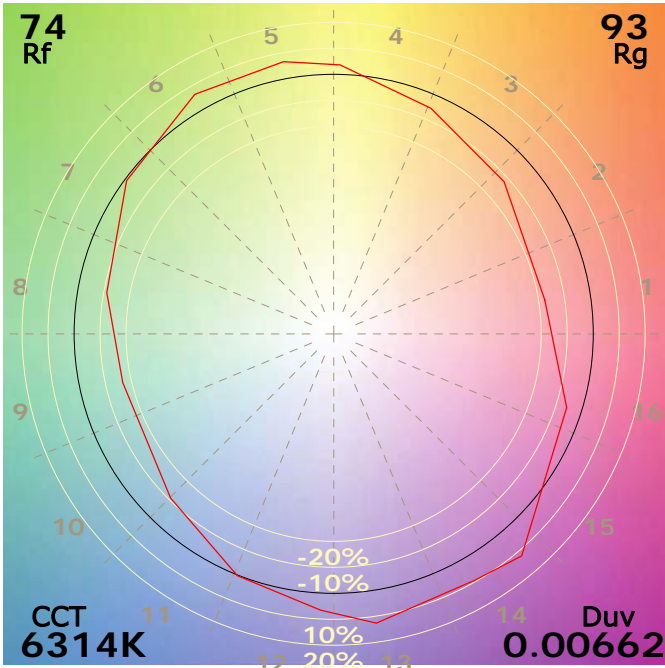
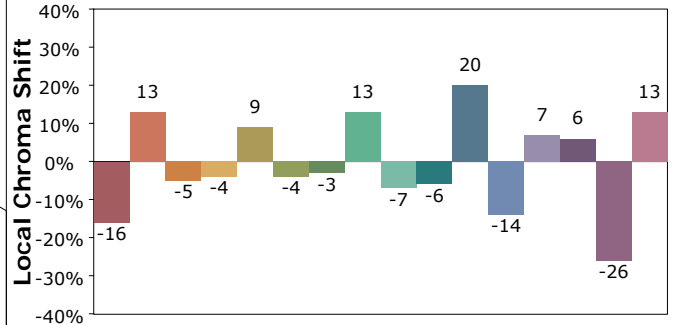
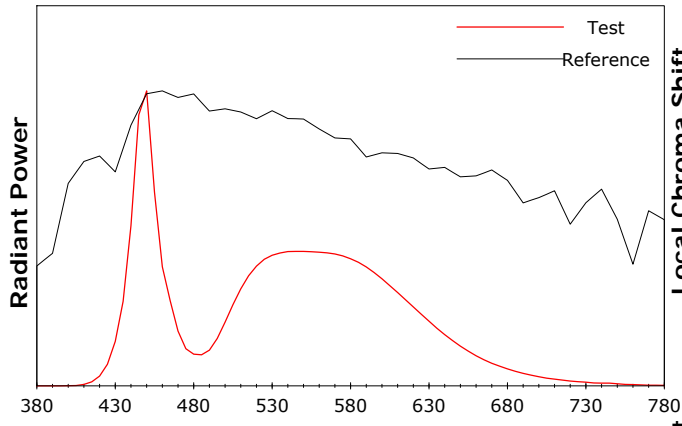
Inspector:

**Product Information IES TM-30-18 Color Rendition Report**

Product Type: 3.66

Product Spec: 长剑一代4头-6500K-12AH

Buyer:



Condition: Tx:26.8'C, Ti:24.8'C, R.H.:60%

Test Lab:

Operator:

Test Device: CMS-2S (Plus)

Test Time: 2026-01-11 19:49:05

Inspector: