

Lightsource Test Report

Product Infomation

Product Type: 5.69

Buyer:

Product Spec: 长剑二代透镜5头-6500K-18AH-感应

CIE Colorimetric Parameters

Chromaticity coordinates: $x=0.3040$ $y=0.3425$ $u(u')=0.1871$ $v=0.3160$ $v'=0.4741$

CCT: $T_c=6846K$ ($duv=0.01421$)

Peak Wavelength: 462.6nm

Dominant Wavelength: 495.7nm

Central Wave: 463.3nm

CRI: $R_a=76.0$

GAI: $GAI_BB_8=75.5$, $GAI_BB_15=83.6$, $GAI_EES=74.7$

$R1=74$

$R2=91$

$R3=90$

$R4=62$

$R5=72$

$R6=86$

$R7=77$

$R8=55$

$R9=-26$

$R10=77$

$R11=61$

$R12=47$

$R13=80$

$R14=94$

$R15=66$

Color Quality Scale: $Q_a=74.3$, $Q_f=75.1$, $Q_p=70.8$, $Q_g=80.8$

$Q1=67$

$Q2=87$

$Q3=86$

$Q4=68$

$Q5=64$

$Q6=62$

$Q7=69$

$Q8=80$

$Q9=92$

$Q10=94$

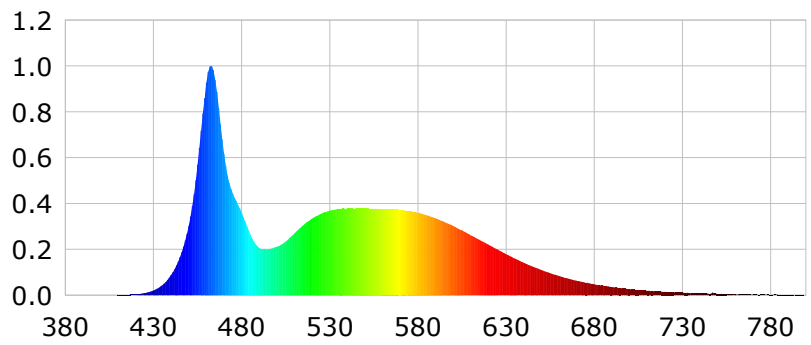
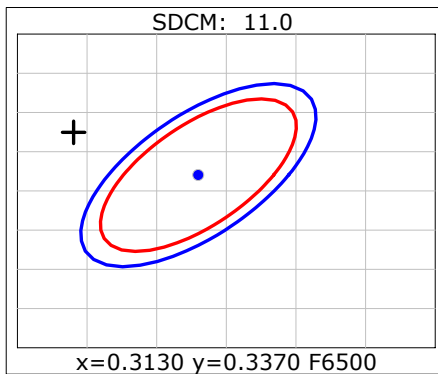
$Q11=88$

$Q12=85$

$Q13=82$

$Q14=63$

$Q15=67$



Photometric Parameters

Luminous Flux: 3364.5 lm

Efficiency: 0.00 lm/W

Radiant Power: 10.471 W

Total mains efficacy: 0.00 lm/W

Energy Efficiency Class: G (EU 2019/2015)

Auxiliary lamp correction factor: 1.00

Electric Parameters

Voltage: 219.90V

Current: 0.0000A

Power: 0.00W

Power Factor: 0.0000

Frequency: 49.99Hz

Test Infomation

Scan Range: 380~800:1nm

Stabilization Time: 0 Sec ALC.: 1.0000

Max of Signal: 49209 (3295)

Photometric Method: sphere-spectroradiometer

Photometric Condition: Sphere diameter: 2.00m, 4T

CCD Integration Time: 66.76 ms

Condition: $T_x=29.3^{\circ}C$, $T_i=27.3^{\circ}C$, R.H.:60%

Test Lab:

Operator:

Test Device: CMS-2S (Plus)

Test Time: 2025-12-22 14:52:04

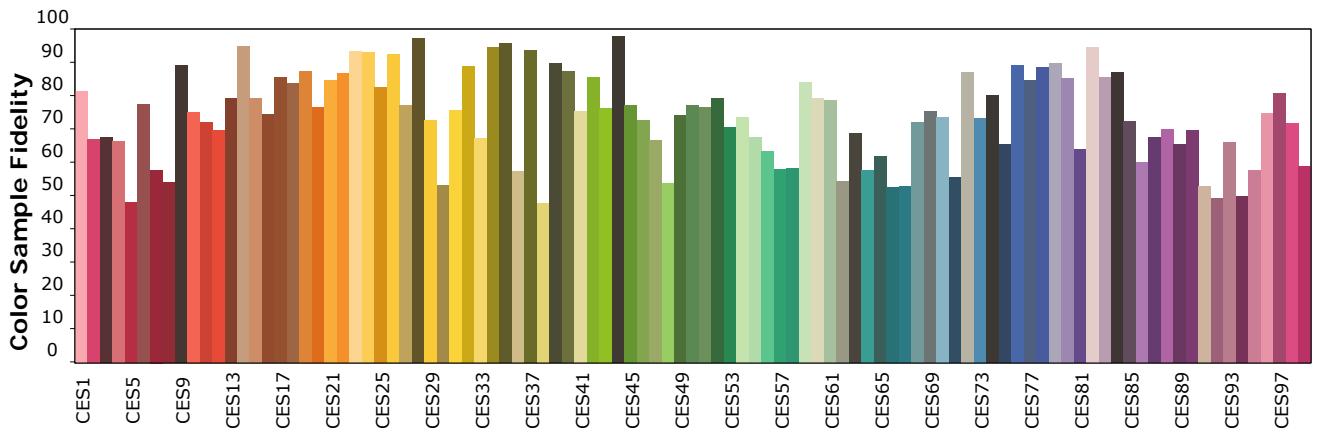
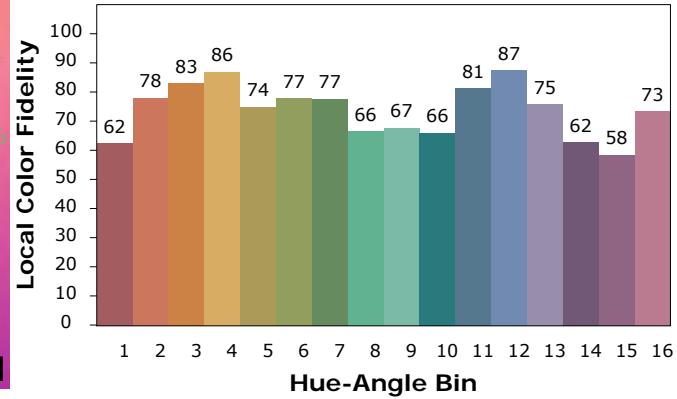
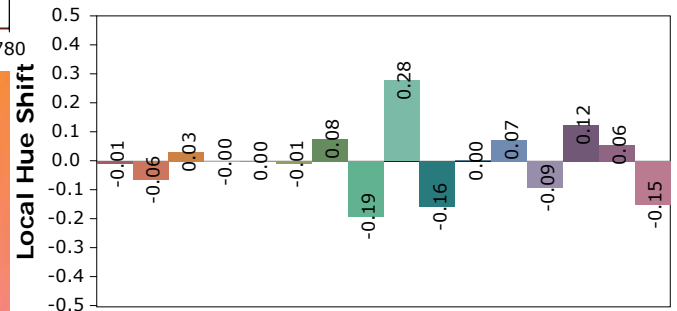
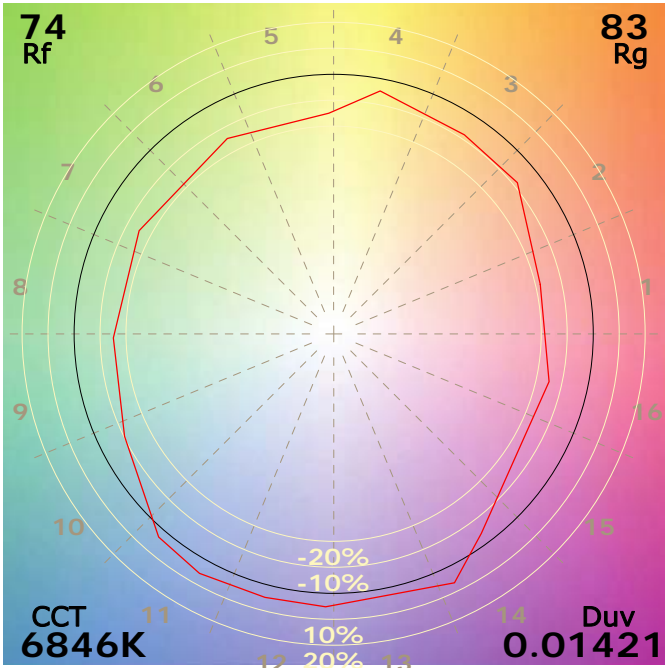
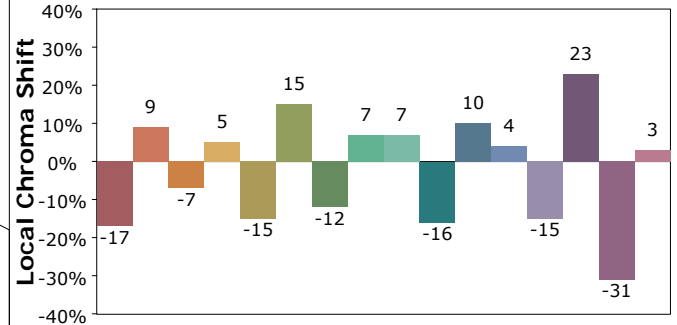
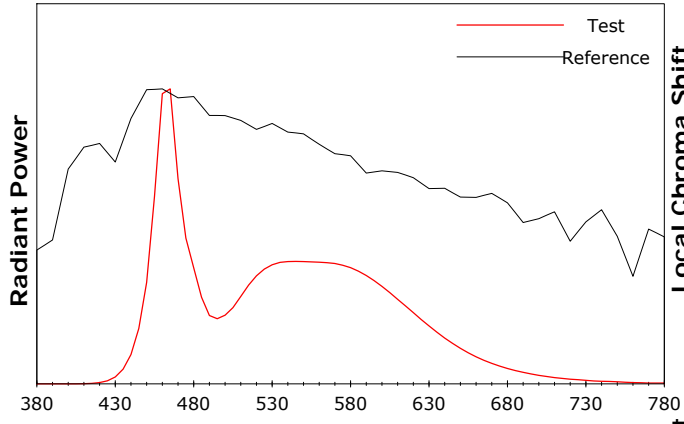
Inspector:

Product Information IES TM-30-18 Color Rendition Report

Product Type: 5.69

Product Spec: 长剑二代透镜5头-6500K-18AH-感应

Buyer:



Condition: Tx:29.3'C, Ti:27.3'C, R.H.:60%

Test Lab:

Operator:

Test Device: CMS-2S (Plus)

Test Time: 2025-12-22 14:52:04

Inspector: