

Lightsource Test Report

Product Infomation

Product Type: 3.8
Product Number: 9

Product Spec: 长剑二代透镜3头-6500K-12AH-感应
Buyer:

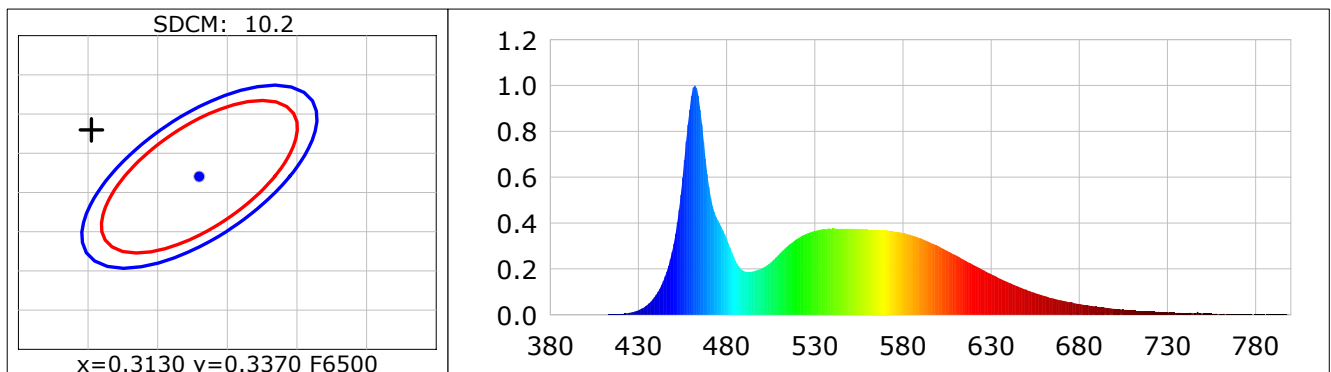
CIE Colorimetric Parameters

Chromaticity coordinates: $x=0.3052$ $y=0.3430$ $u(u')=0.1877$ $v=0.3163$ $v'=0.4745$
 CCT: $T_c=6782K$ ($duv=0.01385$) Color Ratio: $R=0.116$ $G=0.816$ $B=0.068$
 Peak Wavelength: 461.9nm Half Bandwidth: 17.7nm
 Dominant Wavelength: 496.2nm Color Purity: 0.089
 Central Wave: 462.5nm Gravity Wave: 462.3nm
 CRI: $R_a=75.9$ TM30: $R_f=74$, $R_g=83$
 GAI: $GAI_BB_8=75.9$, $GAI_BB_15=84.1$, $GAI_EES=74.9$

R1 =73	R2 =90	R3 =91	R4 =63	R5 =72	R6 =85	R7 =78	R8 =55
R9 =-27	R10=75	R11=61	R12=45	R13=79	R14=95	R15=66	

Color Quality Scale: $Q_a=74.2$, $Q_f=75.0$, $Q_p=70.8$, $Q_g=81.2$

Q1 =68	Q2 =88	Q3 =85	Q4 =67	Q5 =64	Q6 =62	Q7 =70	Q8 =81
Q9 =93	Q10=93	Q11=86	Q12=84	Q13=81	Q14=62	Q15=67	



Photometric Parameters

Luminous Flux: 2304.7 lm Efficiency: 0.00 lm/W Radiant Power: 7.130 W
 Total mains efficacy: 0.00 lm/W Energy Efficiency Class: G (EU 2019/2015)
 Auxiliary lamp correction factor: 1.00

Electric Parameters

Voltage: 220.00V Current: 0.0000A Power: 0.00W
 Power Factor: 0.0000 Frequency: 50.00Hz

Test Infomation

Scan Range: 380~800:1nm Photometric Method: sphere-spectroradiometer
 Stabilization Time: 0 Sec ALC.: 1.0000 Photometric Condition: Sphere diameter: 2.00m, 4T
 Max of Signal: 53934 (3114) CCD Integration Time: 105.96 ms

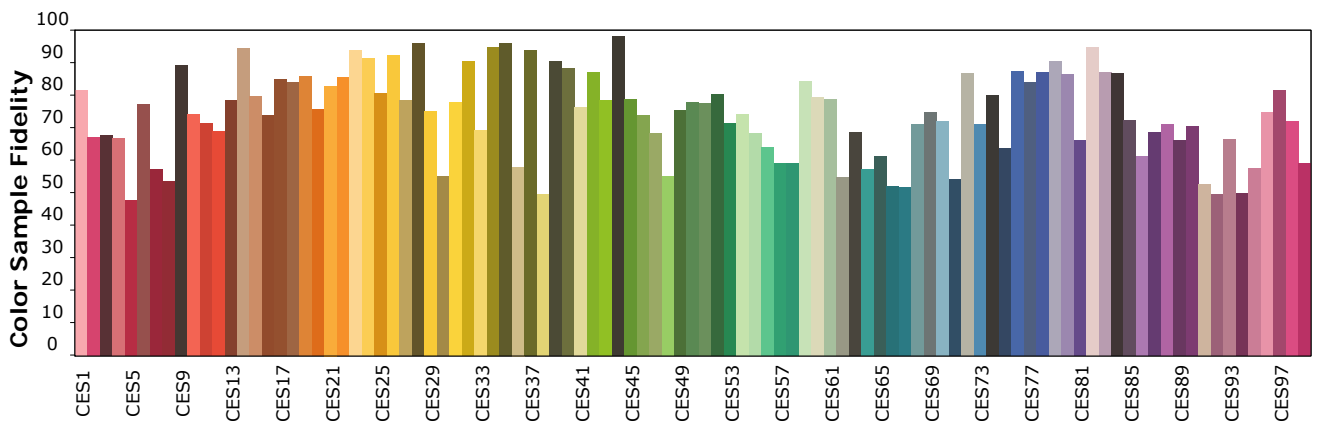
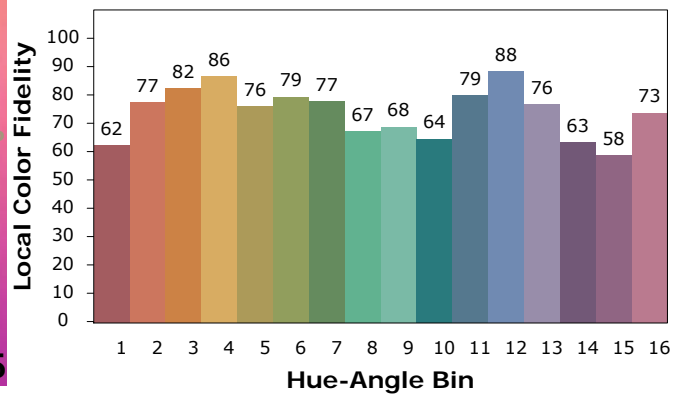
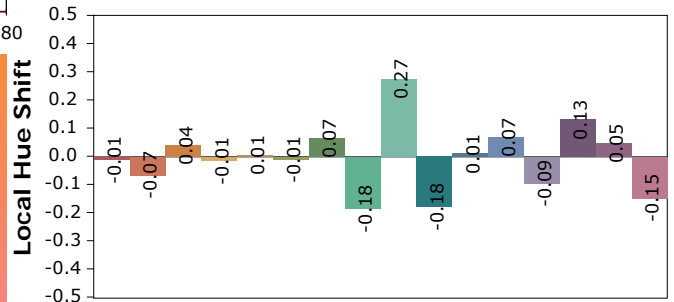
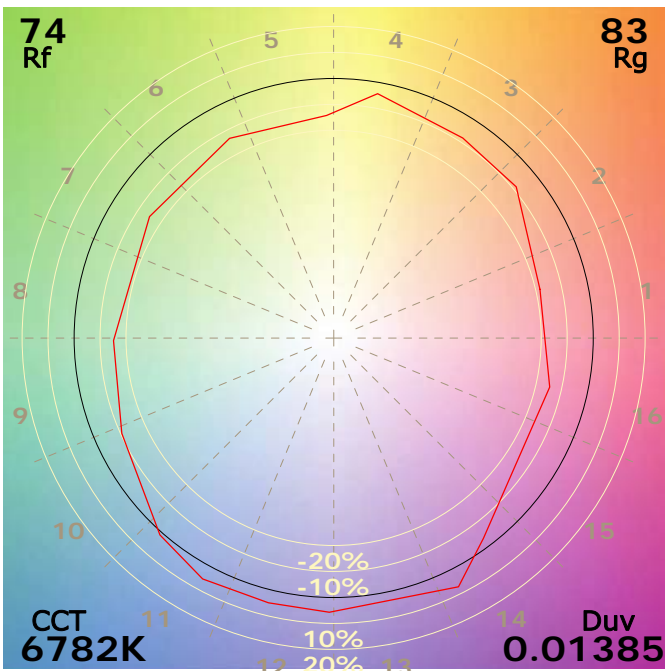
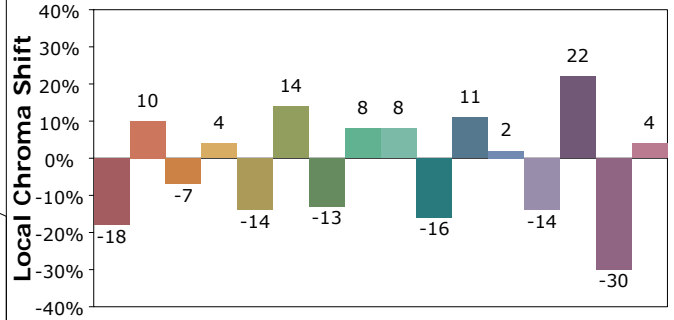
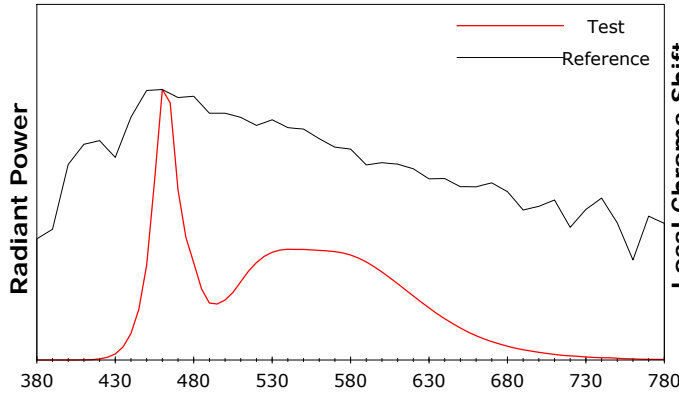
Condition: Tx:25.9'C, Ti:23.6'C, R.H.:60%
 Test Lab:
 Operator:

Test Device: CMS-2S (Plus)
 Test Time: 2026-01-07 21:19:48
 Inspector:

Product Information IES TM-30-18 Color Rendition Report

Product Type: 3.8
Product Number: 9

Product Spec: 长剑二代透镜3头-6500K-12AH-感应
Buyer:



Condition: Tx:25.9'C, Ti:23.6'C, R.H.:60%
Test Lab:
Operator:

Test Device: CMS-2S (Plus)
Test Time: 2026-01-07 21:19:48
Inspector: