

Lightsource Test Report

Product Infomation

Product Spec: 天眼二代透镜6头-3000K-25AH

Product Number: 3

Manufacturer:

CIE Colorimetric Parameters

 Chromaticity coordinates: $x=0.4347$ $y=0.4045$ $u(u')=0.2490$ $v=0.3475$ $v'=0.5212$

 CCT: $T_c=3041K$ ($duv=0.00049$)

 Color Ratio: $R=0.214$ $G=0.751$ $B=0.035$

Peak Wavelength: 594.1nm

Half Bandwidth: 99.9nm

Dominant Wavelength: 582.5nm

Color Purity: 0.519

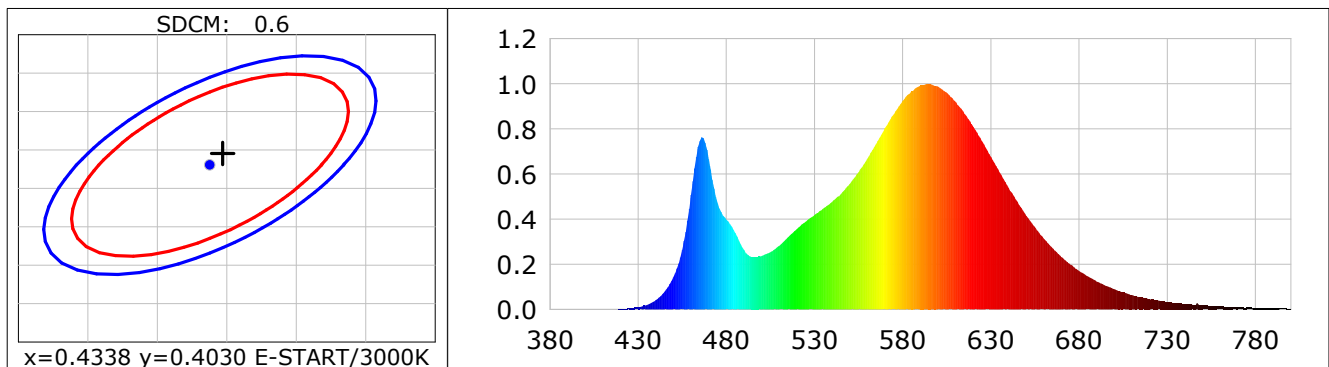
Central Wave: 593.1nm

Gravity Wave: 593.4nm

 CRI: $R_a=73.1$

 TM30: $R_f=73$, $R_g=83$

 GAI: $GAI_BB_8=80.3$, $GAI_BB_15=92.2$, $GAI_EES=47.0$
 $R1=72$
 $R2=92$
 $R3=86$
 $R4=63$
 $R5=72$
 $R6=90$
 $R7=70$
 $R8=39$
 $R9=-31$
 $R10=81$
 $R11=58$
 $R12=65$
 $R13=77$
 $R14=93$
 $R15=63$

 Color Quality Scale: $Q_a=73.5$, $Q_f=75.7$, $Q_p=71.2$, $Q_g=80.6$
 $Q1=69$
 $Q2=88$
 $Q3=85$
 $Q4=69$
 $Q5=65$
 $Q6=64$
 $Q7=69$
 $Q8=81$
 $Q9=92$
 $Q10=92$
 $Q11=83$
 $Q12=77$
 $Q13=75$
 $Q14=61$
 $Q15=65$

Photometric Parameters

Luminous Flux: 3548.1 lm

Efficiency: 0.00 lm/W

Radiant Power: 10.158 W

Total mains efficacy: 0.00 lm/W

Energy Efficiency Class: G (EU 2019/2015)

Auxiliary lamp correction factor: 1.00

Electric Parameters

Voltage: 220.00V

Current: 0.0000A

Power: 0.00W

Power Factor: 0.0000

Frequency: 50.00Hz

Test Infomation

Scan Range: 380~800:1nm

Photometric Method: sphere-spectroradiometer

Stabilization Time: 0 Sec ALC.: 1.0000

Photometric Condition: Sphere diameter: 2.00m, 4T

Max of Signal: 51123 (3509)

CCD Integration Time: 121.33 ms

 Condition: $T_x=31.3^\circ C$, $T_i=29.1^\circ C$, R.H.:60%

Test Lab:

Operator:

Test Device: CMS-2S (Plus)

Test Time: 2025-09-09 18:19:14

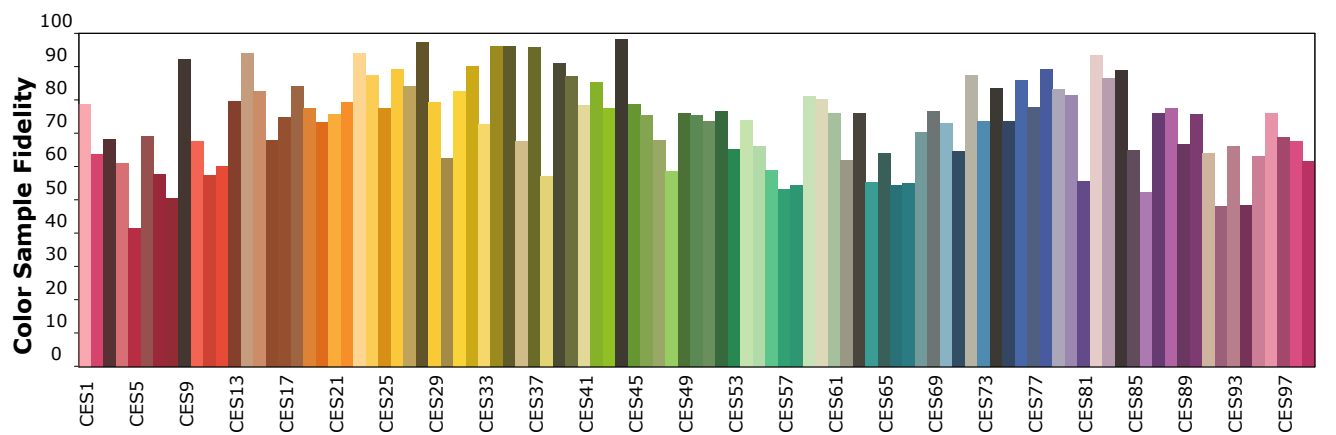
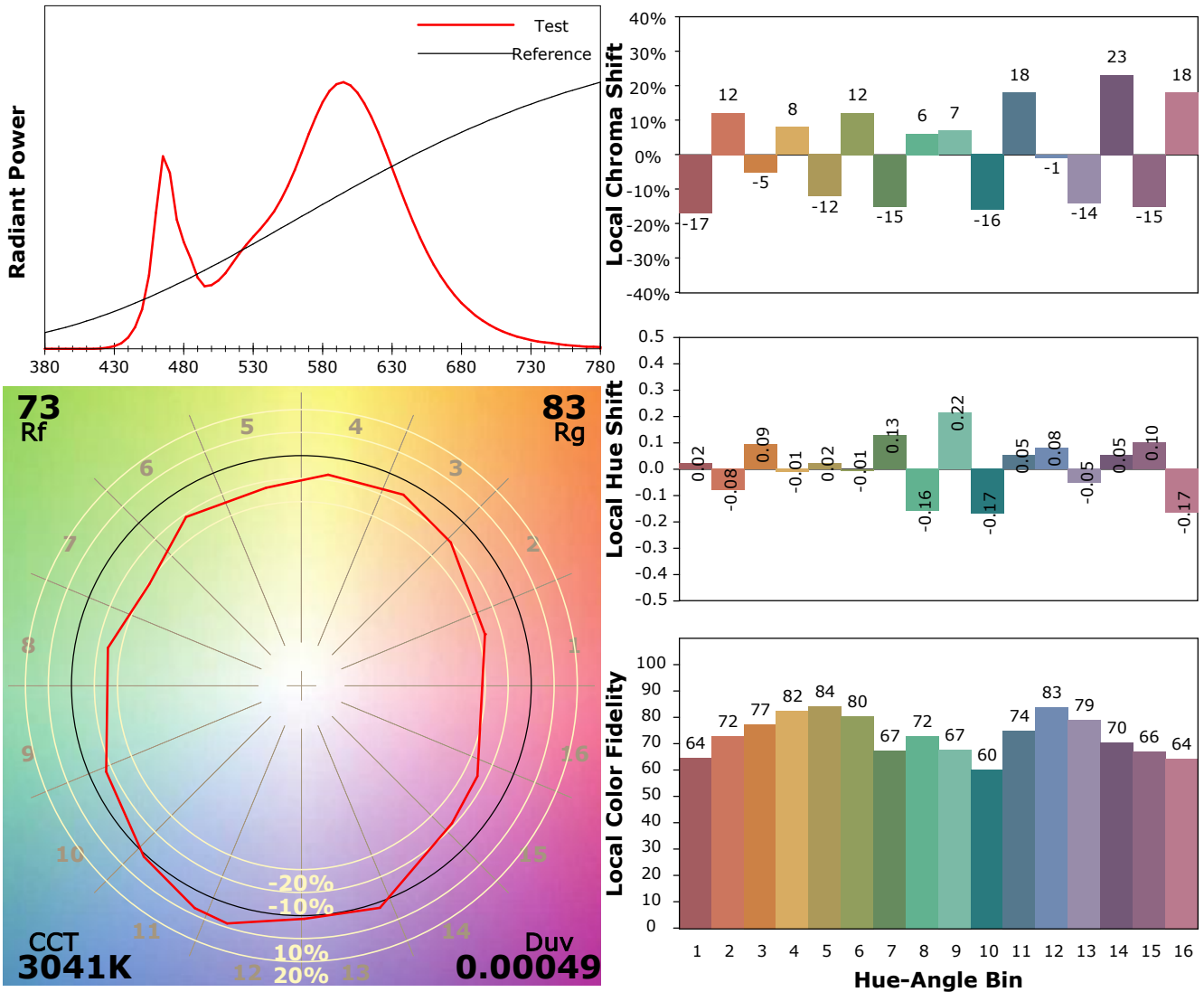
Inspector:

Product Information IES TM-30-18 Color Rendition Report

Product Spec: 天眼二代透镜6头-3000K-25AH

Product Number: 3

Manufacturer:



Condition: Tx:31.3'C, Ti:29.1'C, R.H.:60%

Test Lab:

Operator:

Test Device: CMS-2S (Plus)

Test Time: 2025-09-09 18:19:14

Inspector: