

## Lightsource Test Report

### Product Infomation

Product Spec: 一体二代反光3头-6500K-10AH-感应      Buyer:

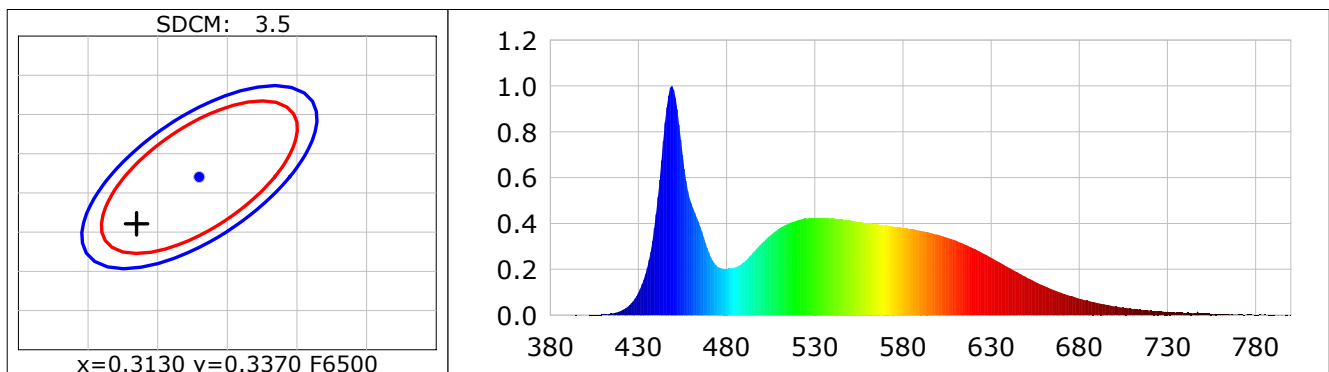
### CIE Colorimetric Parameters

Chromaticity coordinates:  $x=0.3085$   $y=0.3310$      $u(u')=0.1942$   $v=0.3125$   $v'=0.4688$   
 CCT:  $T_c=6718K$  ( $duv=0.00637$ )                      Color Ratio:  $R=0.133$   $G=0.812$   $B=0.055$   
 Peak Wavelength: 448.8nm                              Half Bandwidth: 18.6nm  
 Dominant Wavelength: 490.5nm                        Color Purity: 0.085  
 Central Wave: 450.1nm                                  Gravity Wave: 449.7nm  
 CRI:  $R_a=84.0$     TM30:  $R_f=84$ ,  $R_g=96$   
 GAI:  $GAI\_BB\_8=90.8$ ,  $GAI\_BB\_15=95.8$ ,  $GAI\_EES=89.4$   

R1 =82	R2 =87	R3 =90	R4 =85	R5 =83	R6 =82	R7 =90	R8 =73
R9 =14	R10=69	R11=84	R12=58	R13=84	R14=95	R15=78	

Color Quality Scale:  $Q_a=83.7$ ,  $Q_f=83.4$ ,  $Q_p=84.4$ ,  $Q_g=92.9$   

Q1 =86	Q2 =98	Q3 =79	Q4 =76	Q5 =82	Q6 =85	Q7 =88	Q8 =92
Q9 =96	Q10=87	Q11=85	Q12=85	Q13=85	Q14=74	Q15=79	



### Photometric Parameters

Luminous Flux: 1684.6 lm                      Efficiency: 0.00 lm/W                      Radiant Power: 5.434 W  
 Total mains efficacy: 0.00 lm/W              Energy Efficiency Class: G (EU 2019/2015)  
 Auxiliary lamp correction factor: 1.00

### Electric Parameters

Voltage: 220.00V                                      Current: 0.0000A                              Power: 0.00W  
 Power Factor: 0.0000                              Frequency: 49.99Hz

### Test Infomation

Scan Range: 380~800:1nm	Photometric Method: sphere-spectroradiometer
Stabilization Time: 0 Sec    ALC.: 1.0000	Photometric Condition: Sphere diameter: 2.00m, 4π
Max of Signal: 53557 (3090)	CCD Integration Time: 157.35 ms

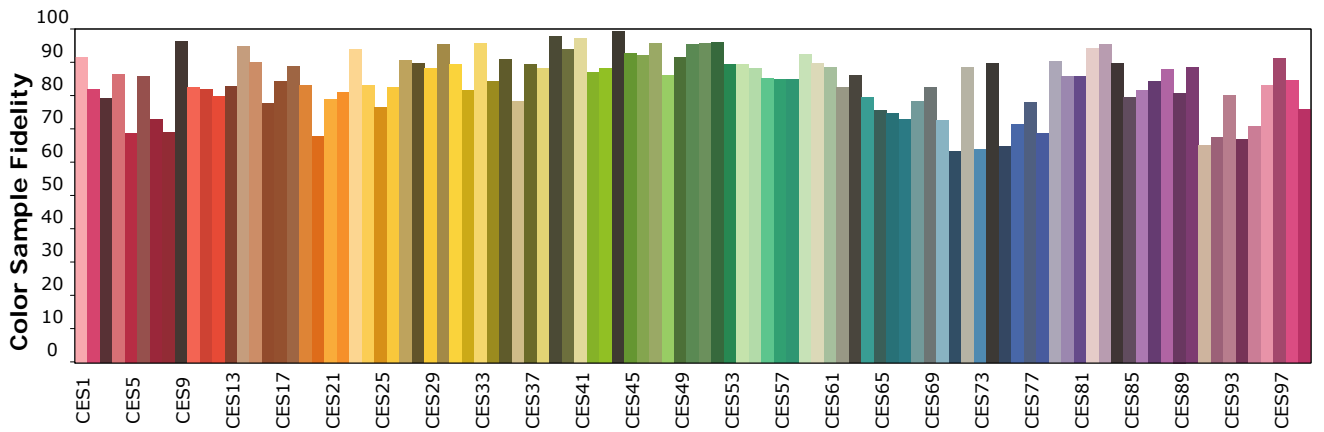
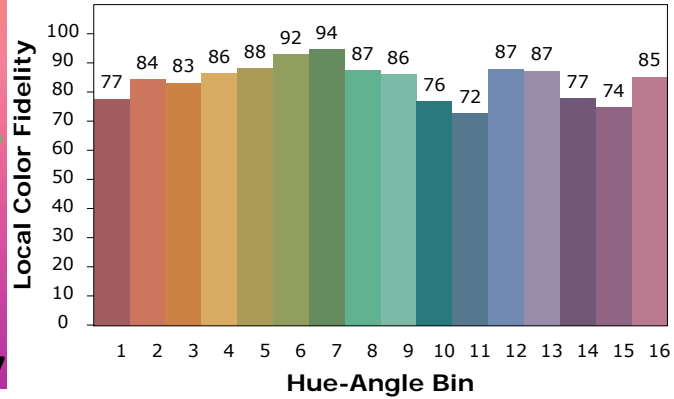
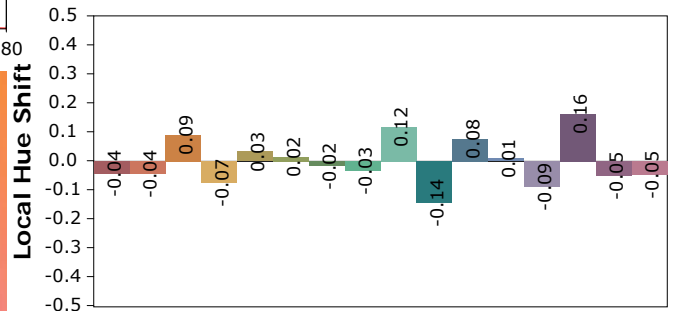
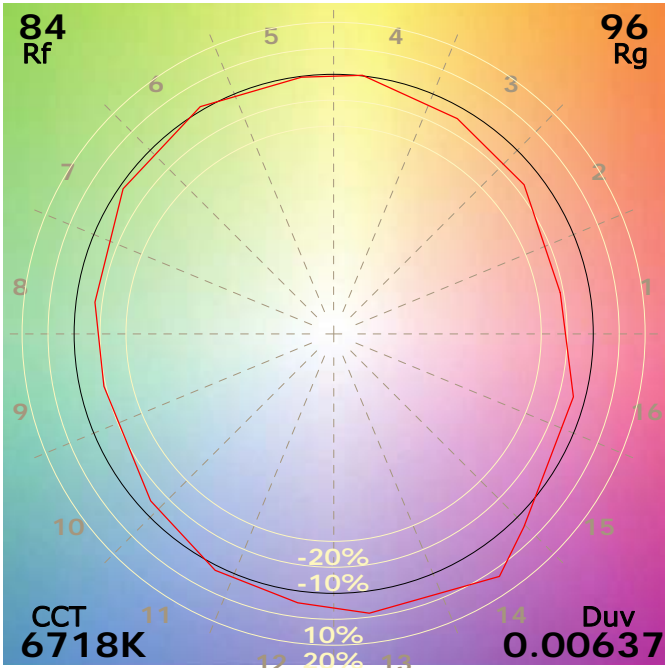
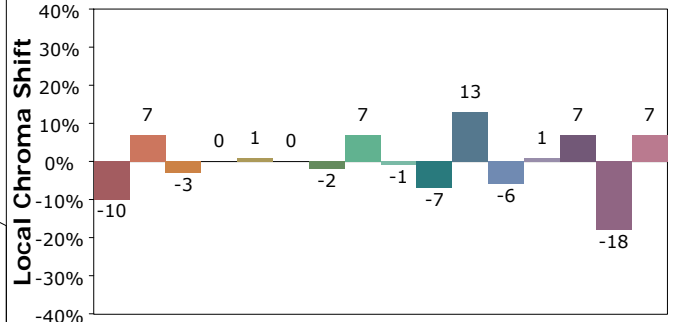
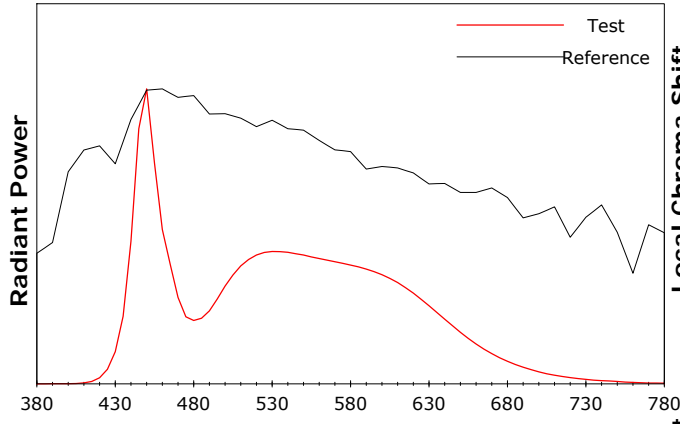
Condition: Tx:25.1'C, Ti:24.4'C, R.H.:60%  
 Test Lab:  
 Operator:

Test Device: CMS-2S (Plus)  
 Test Time: 2026-01-12 09:26:23  
 Inspector:

**Product Information IES TM-30-18 Color Rendition Report**

Product Spec: 一体二代反光3头-6500K-10AH-感应

Buyer:



Condition: Tx:25.1'C, Ti:24.4'C, R.H.:60%  
 Test Lab:  
 Operator:

Test Device: CMS-2S (Plus)  
 Test Time: 2026-01-12 09:26:23  
 Inspector: