

## Lightsource Test Report

### Product Infomation

Product Spec: 长剑二代反光5头-6500K-15AH-感应      Buyer:

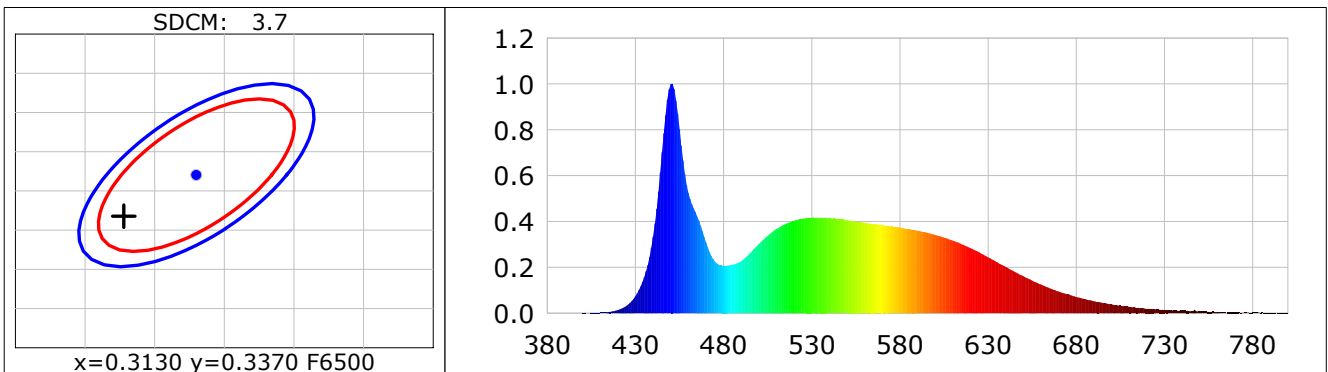
### CIE Colorimetric Parameters

Chromaticity coordinates:  $x=0.3078$   $y=0.3318$      $u(u')=0.1934$   $v=0.3127$   $v'=0.4691$   
 CCT:  $T_c=6750K$  ( $duv=0.00708$ )      Color Ratio:  $R=0.132$   $G=0.811$   $B=0.057$   
 Peak Wavelength: 450.5nm      Half Bandwidth: 18.3nm  
 Dominant Wavelength: 490.9nm      Color Purity: 0.087  
 Central Wave: 451.8nm      Gravity Wave: 451.5nm  
 CRI:  $R_a=84.1$       TM30:  $R_f=84$ ,  $R_g=95$   
 GAI:  $GAI\_BB\_8=89.7$ ,  $GAI\_BB\_15=95.2$ ,  $GAI\_EES=88.4$   

R1 =82	R2 =88	R3 =91	R4 =84	R5 =83	R6 =83	R7 =90	R8 =73
R9 =14	R10=70	R11=83	R12=55	R13=84	R14=95	R15=78	

Color Quality Scale:  $Q_a=83.5$ ,  $Q_f=83.4$ ,  $Q_p=83.7$ ,  $Q_g=92.1$   

Q1 =85	Q2 =99	Q3 =79	Q4 =75	Q5 =81	Q6 =84	Q7 =87	Q8 =91
Q9 =97	Q10=88	Q11=86	Q12=86	Q13=86	Q14=74	Q15=79	



### Photometric Parameters

Luminous Flux: 2695.8 lm      Efficiency: 0.00 lm/W      Radiant Power: 8.682 W  
 Total mains efficacy: 0.00 lm/W      Energy Efficiency Class: G (EU 2019/2015)  
 Auxiliary lamp correction factor: 1.00

### Electric Parameters

Voltage: 220.10V      Current: 0.0000A      Power: 0.00W  
 Power Factor: 0.0000      Frequency: 50.00Hz

### Test Infomation

Scan Range: 380~800:1nm      Photometric Method: sphere-spectroradiometer  
 Stabilization Time: 0 Sec    ALC.: 1.0000      Photometric Condition: Sphere diameter: 2.00m, 4T  
 Max of Signal: 52209 (3202)      CCD Integration Time: 91.95 ms

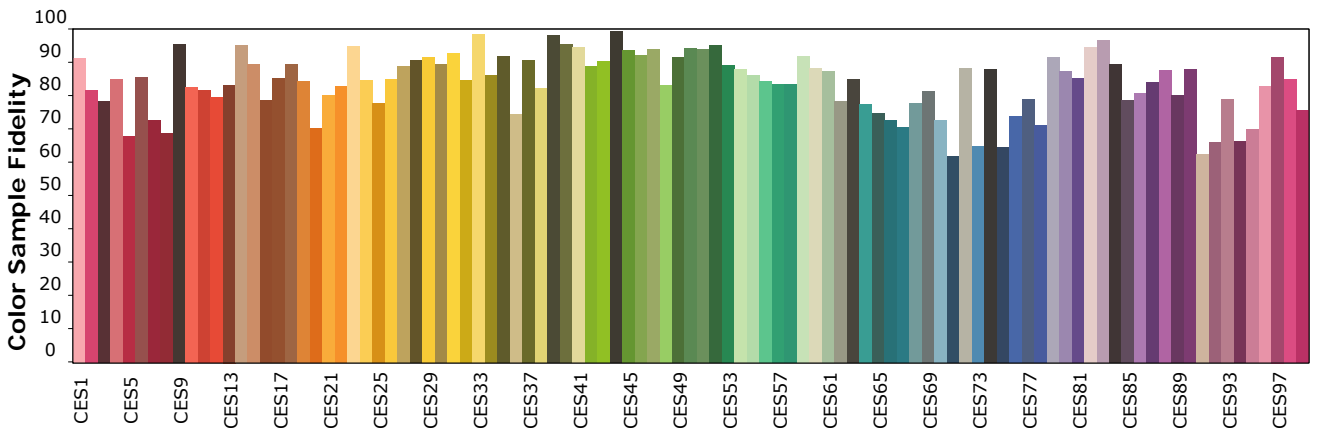
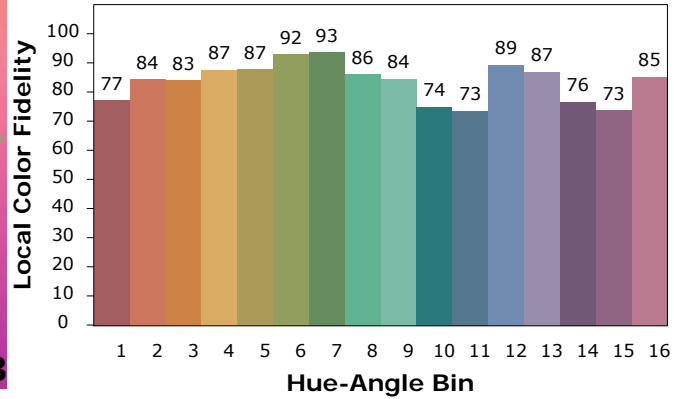
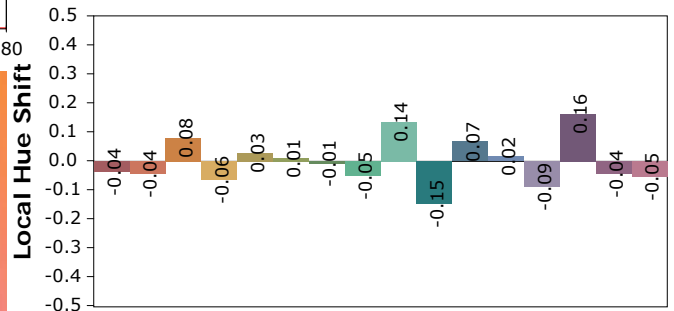
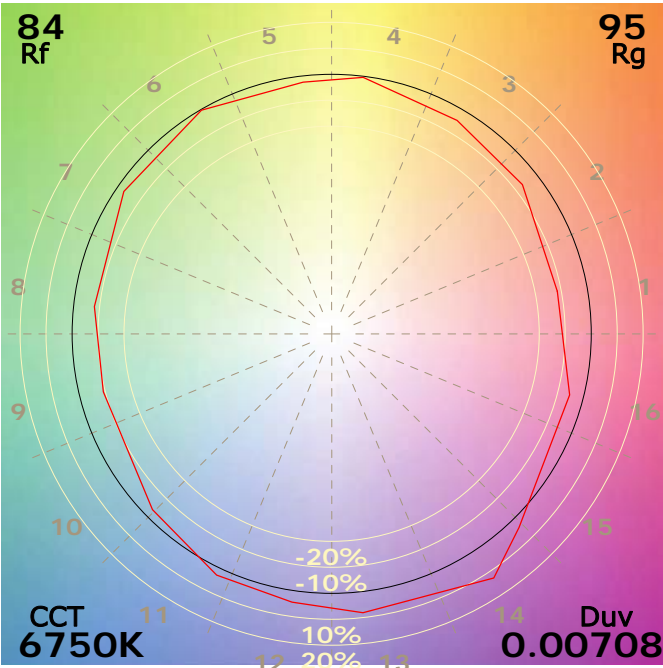
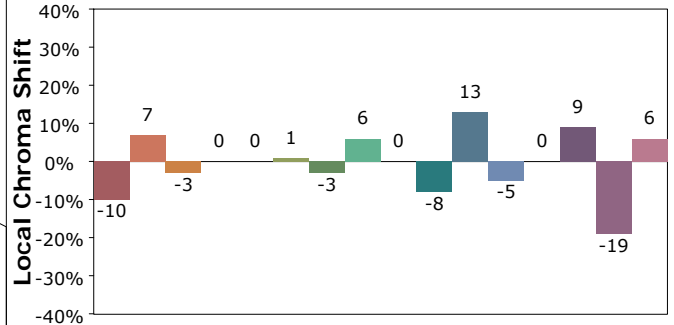
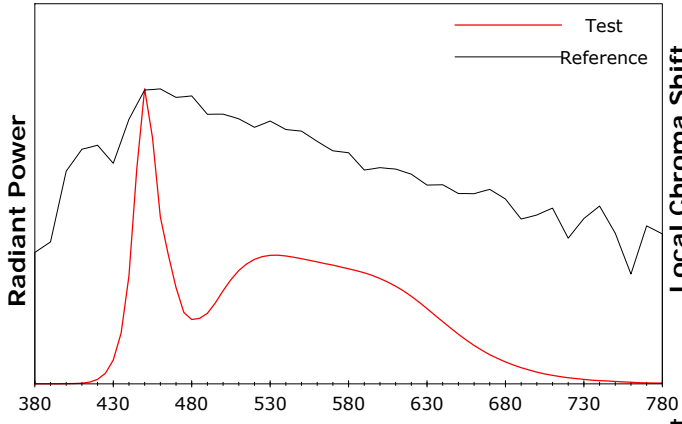
Condition:  $T_x:27.4^{\circ}C$ ,  $T_i:25.4^{\circ}C$ , R.H.:60%  
 Test Lab:  
 Operator:

Test Device: CMS-2S (Plus)  
 Test Time: 2026-01-12 16:44:45  
 Inspector:

**Product Information IES TM-30-18 Color Rendition Report**

Product Spec: 长剑二代反光5头-6500K-15AH-感应

Buyer:



Condition: Tx:27.4'C, Ti:25.4'C, R.H.:60%  
 Test Lab:  
 Operator:

Test Device: CMS-2S (Plus)  
 Test Time: 2026-01-12 16:44:45  
 Inspector: