

# The Art of designing for light

## NGL007

### COURTYARD LAMP SERIES

NGL007 COMBINES THE MOST DREAMY LIGHT AND SHADOW PROJECTION WITH URBAN LIGHTING.

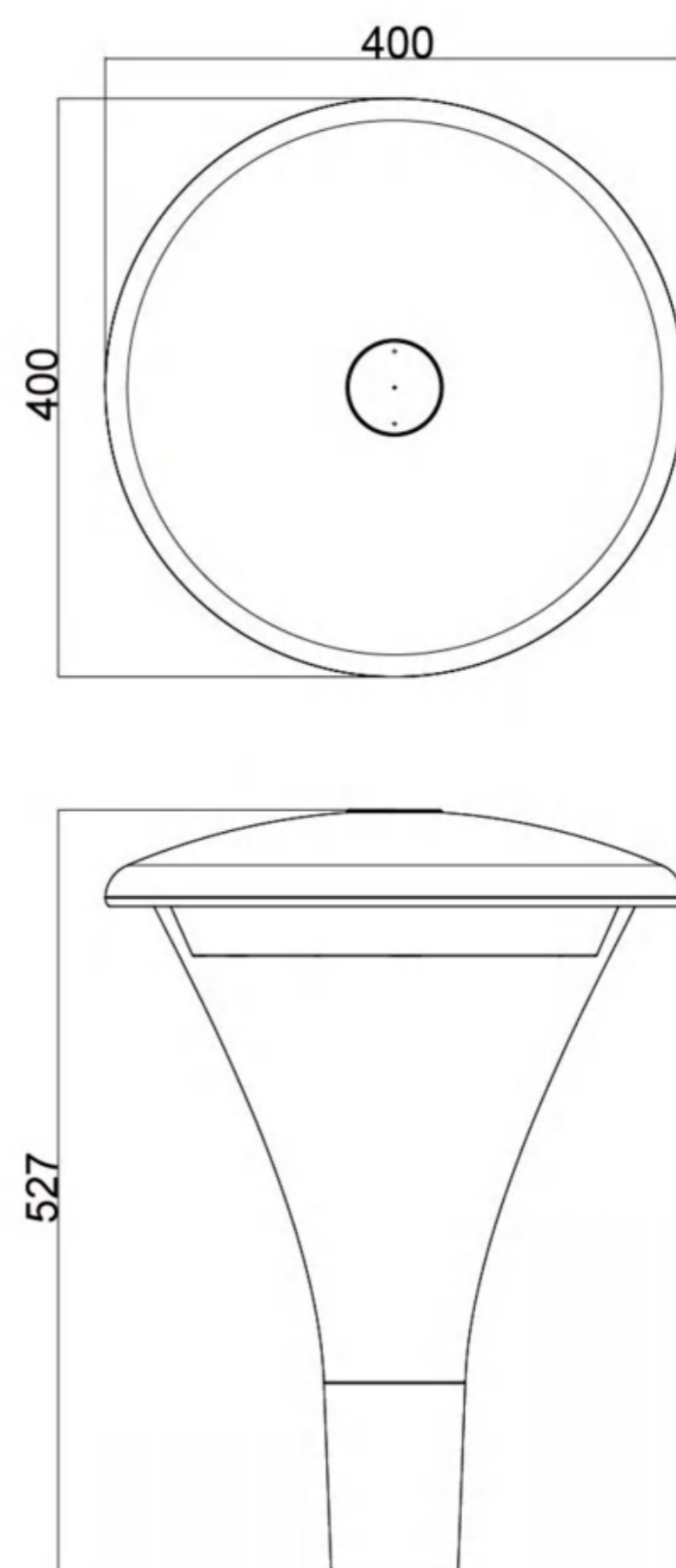
THE DIAMOND MIRROR COVER IS MADE OF UV RESISTANT MILKY WHITE POLYCARBONATE,

EXCELLENT OPTICAL PERFORMANCE, UNIFORM LIGHT DISTRIBUTION; IMPROVE PRODUCT PERFORMANCE AND EFFICIENCY WHILE SIMPLIFYING INSTALLATION AND ENHANCING USER EXPERIENCE.



# TECHNICAL SPECIFICATIONS

Product Code/产品编号	NGL007
Rated power/额定功率	20W-80W
LED	3030/5050
LED Quantity/LED数量	96PCS/36PCS
Color Temperature/色温	6500/4000/3000K
Luminous Flux/灯具光效	130-140LM/W / 150-160LM/W
Input Voltage/输入电压	AC220-240V
Frequency Range/频率	50/60Hz
Color Temperature/显色指数	> Ra70
Temperature of working condition 工作环境温度	-40°C-50°C
Humidity of working condition 工作环境湿度	20%-90%
Installation Pipe Dia/安装管径	φ60mm/φ80mm
Installation Height/安装高度	3-6m
Fixture Weight/空包 净/毛重	4.2/5.4KG
Light Weight/成品 净/毛重	5.0/6.2KG
Product Size/产品尺寸	400*527mm
Packing Size/包装尺寸	415*415*560mm

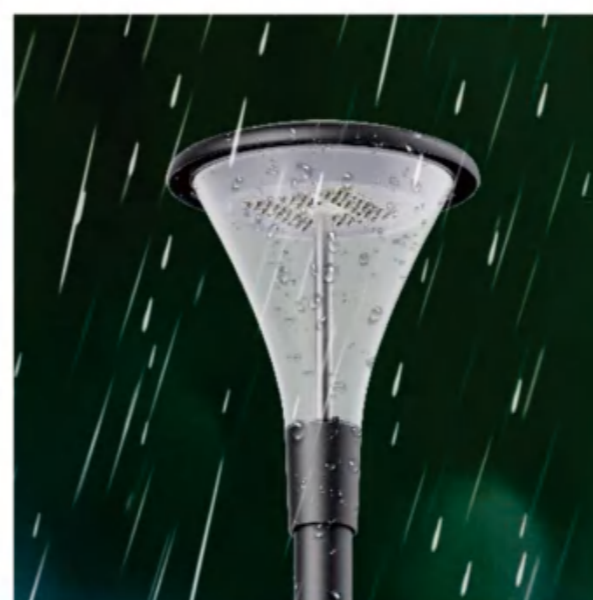


## DURABILITY FEATURES



### IK08 RATED

Fully sealed, drop-proof, and impact-resistant. Constructed from robust ADC12 aluminum alloy for superior durability.

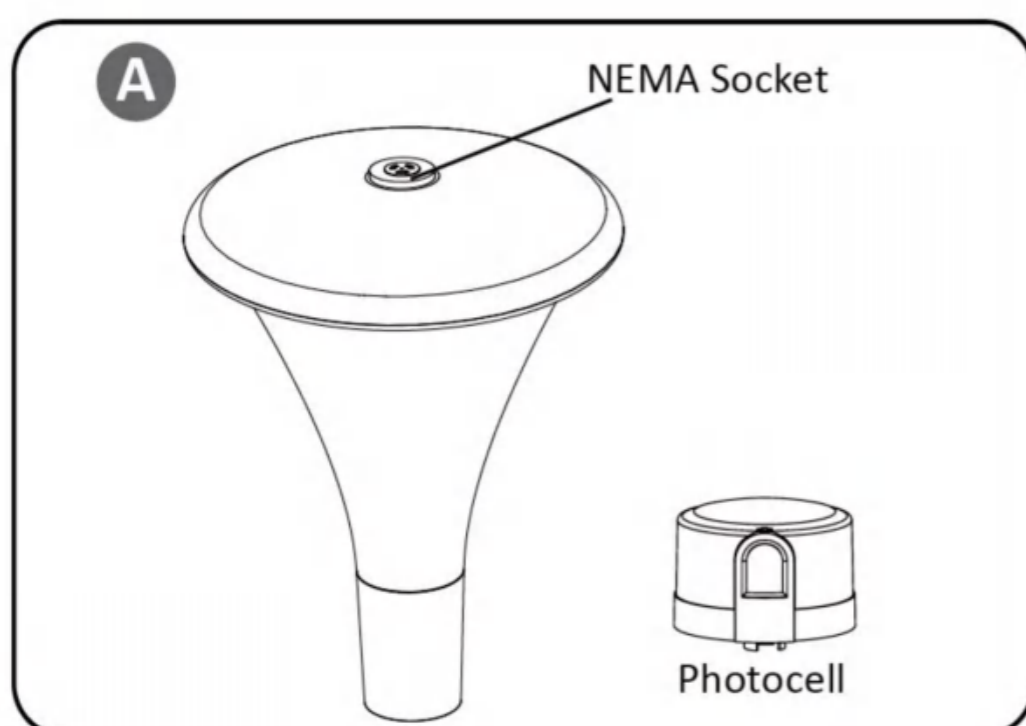


### IP66 RATED

Professionally sealed for all-around weather protection. Waterproof, corrosion-resistant, and high-temperature tolerant, ensuring long-lasting performance.

## OPTICAL CONTROL

Optical control function is supported by optional



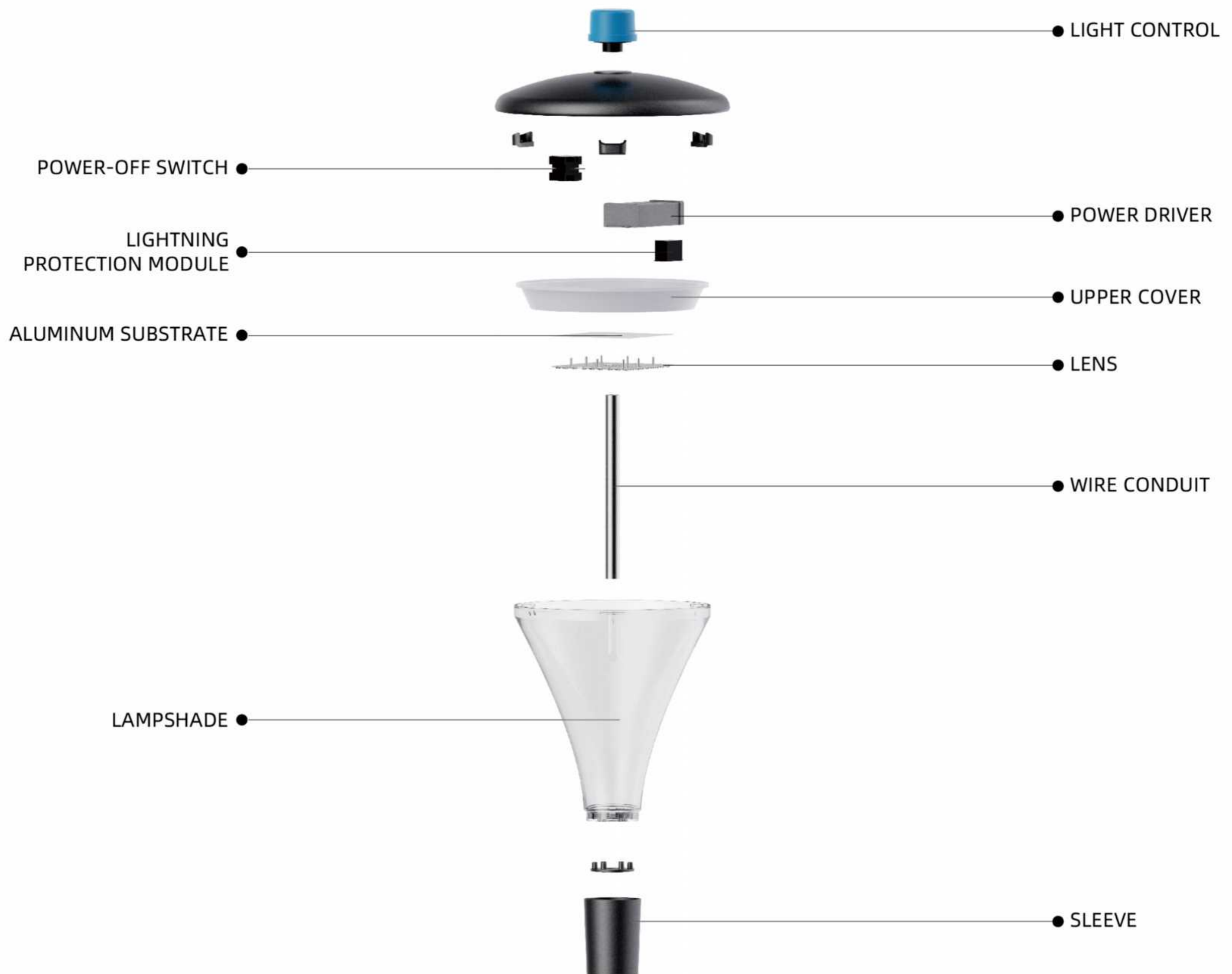
If the fixture with PHOTOCELL function, the NEMA Socket will be installed on the cover of fixture. See **A**. Fit the pins of Photocell to NEMA Socket, firmly insert and rotate Photocell to proper position.

<Verifying>

Make sure all the connections done and photocell is well installed on the fixture. switch on the power supply and cover the window of NEMA Socket, wait 5 seconds the fixture will be turned on.

# STRUCTURAL DISPLAY

The lamp has high energy efficiency and is equipped with the latest developed aluminum optical components, ensuring high visual comfort and higher efficiency. The NGL007 series can be applied to design solutions for any city and street lighting project, ensuring quality and high performance.

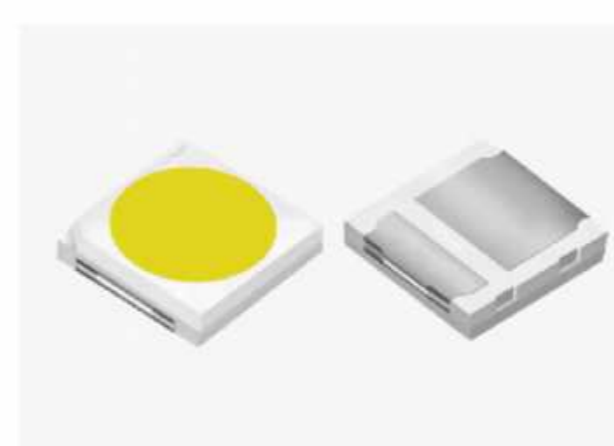


## SERIES DISPLAY



### BODY

The body is made of high pressure die-cast aluminum with strong corrosion resistance. The overall modeling design is simple and atmospheric, modern and beautiful.



### LED LIGHT SOURCE

Adopting brightness led chip, high luminous efficiency, more energy saving, and high cost effectiveness.



### BUILT-IN DRIVER

Driver by well-known brands. Meanwell, Inventronics driver, Philips and so on.



### LENS OPTIONS

Adopting patented optical technology and special lens structure. Create a flickering shaped light distribution to achieve optimal uniformity. Enhance overall lighting effect.



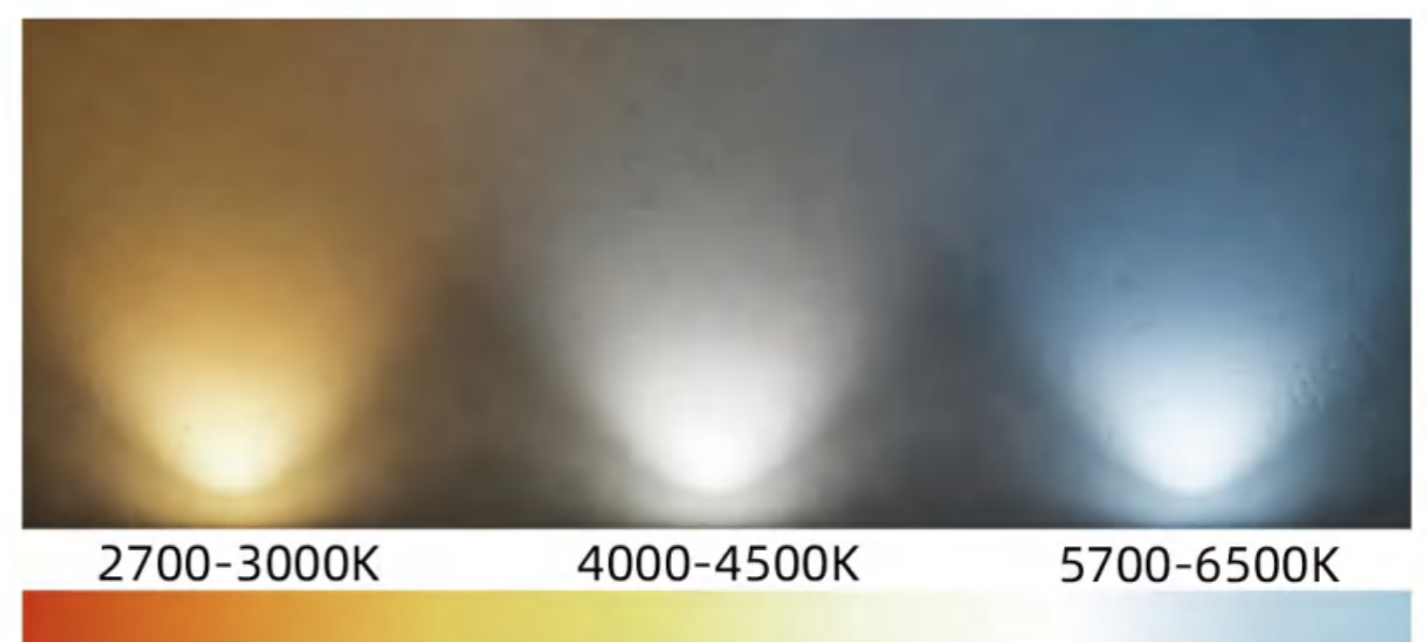
# TURN STREETS INTO ZONES OF WELL-BEING

The main task of street lighting is to illuminate streets and plazas evenly and glare-free. And while purely technical solutions retreat into the background, urban lighting offers much more. Thanks to special lighting technology, light is not only directed onto the street, rather the luminaire itself becomes a luminous element which creates a completely new and appealing effect.

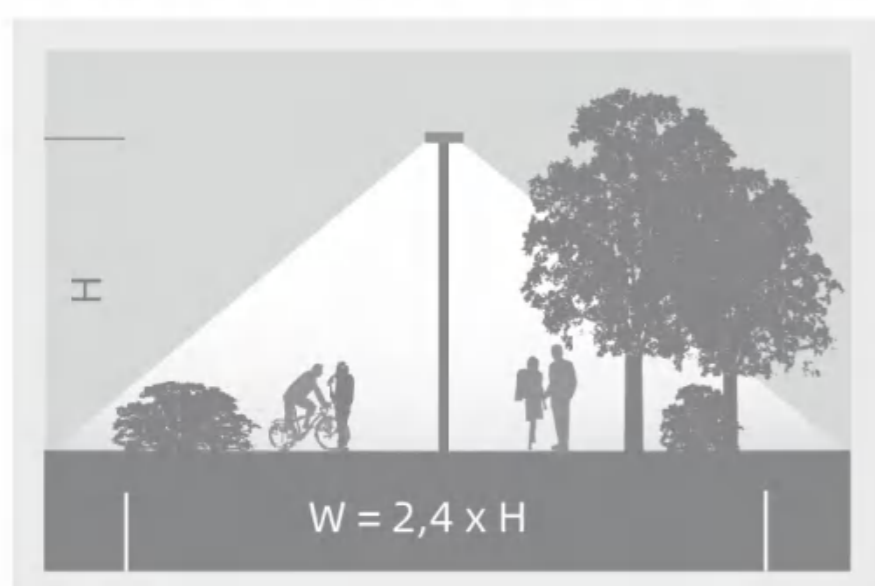
Excellent technical features go hand in hand with all of this in terms of service life, energy efficiency and stability.

Luminaires have become an integral part of the visual field for urban residents and drivers, providing excellent optical guidance while ensuring high visual comfort. YC-GL03A further enhances this effect.

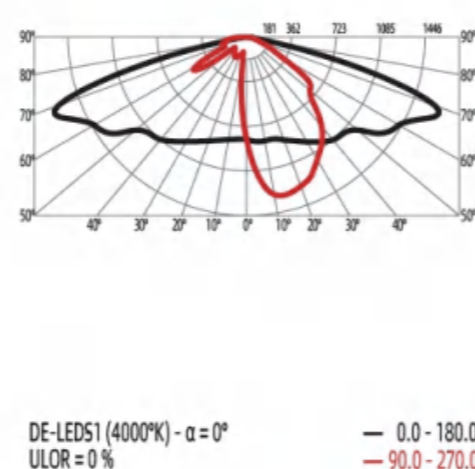
The lighting fixture features adjustable color temperature to suit various lighting requirements, with a range from warm to cool white light (2700K-6500K).



## Light distributions of Litepole

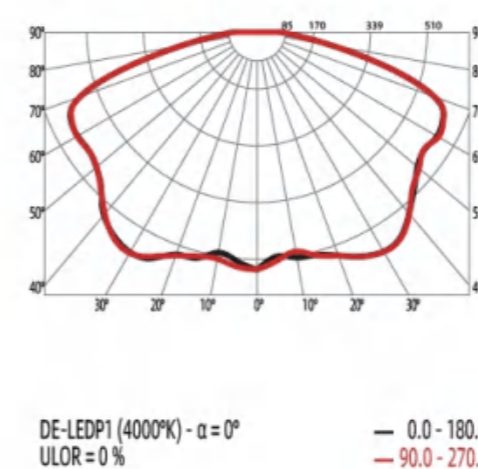
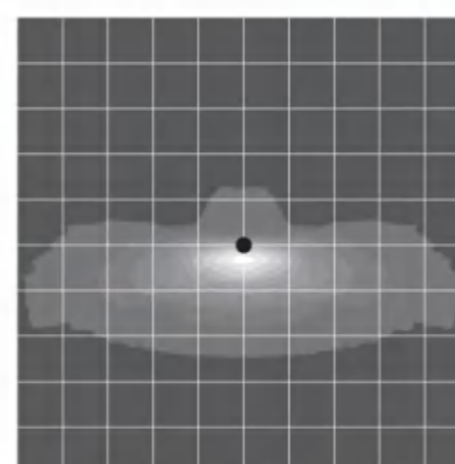


PL1.2s - For plazas:  
Symmetric, wide distribution



Lighting of bicycle lanes or narrow roads. Circulation track and narrow road.

Note: This optic is not dedicated to this application only. It can also be used for other configurations.



Symmetric light distribution.

Note: This optic is not dedicated to this application only. It can also be used for other configurations.

